

Willcott Road, W3

£495,000

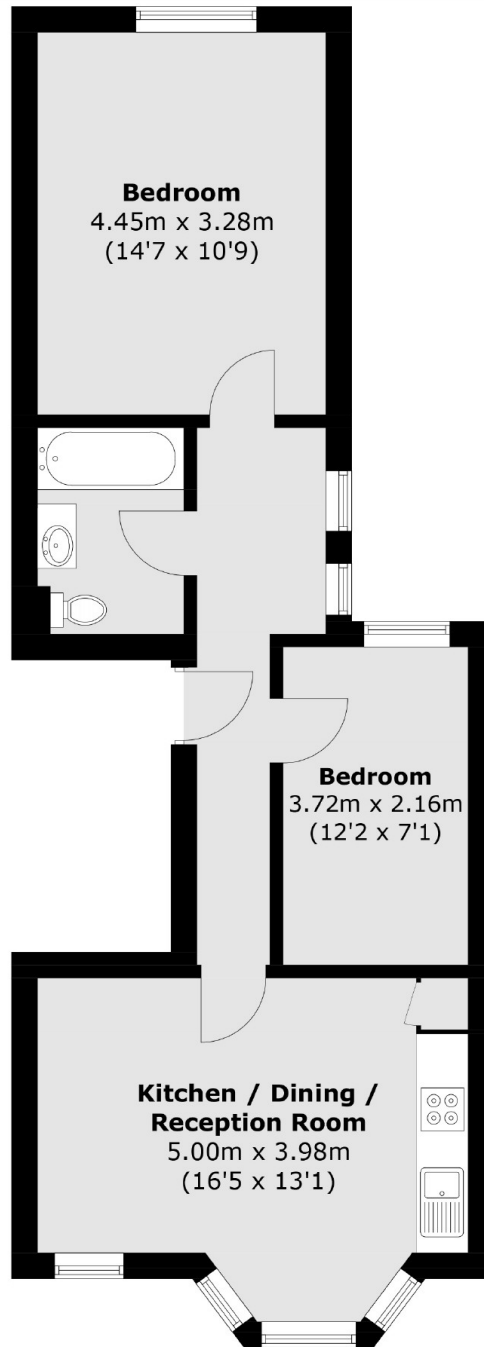
Stylish two bedroom period conversion flat on the first floor. Classic charm meets modern comfort. Prime location. Your perfect home awaits! No onward chain.

Less than half a mile from Acton Town and Ealing Common tube stations (District and Piccadilly lines). Acton Main Line (Elizabeth line) is under a mile away.

Features

Period Conversion
First Floor
Share of Freehold
No Onward Chain
Close to Tube Stations
Two Bedrooms

Willcott Road,
London, W3



Total area (approx.): 53.4 sq. m (574.8 sq. ft)

Dexters

Acton
171 High Street
London
W3 6LP
Sales
020 8896 2112

Energy Rating: C. We aim to make our particulars both accurate and reliable. However they are not guaranteed; nor do they form part of an offer or contract. If you require clarification on any points then please contact us, especially if you're traveling some distance to view. Please note that appliances and heating systems have not been tested and therefore no warranties can be given as to their good working order.

 **RICS** | Regulated
Estate Agent
and Letting Agent

dexters.co.uk