



Holley Road, W3

£299,000

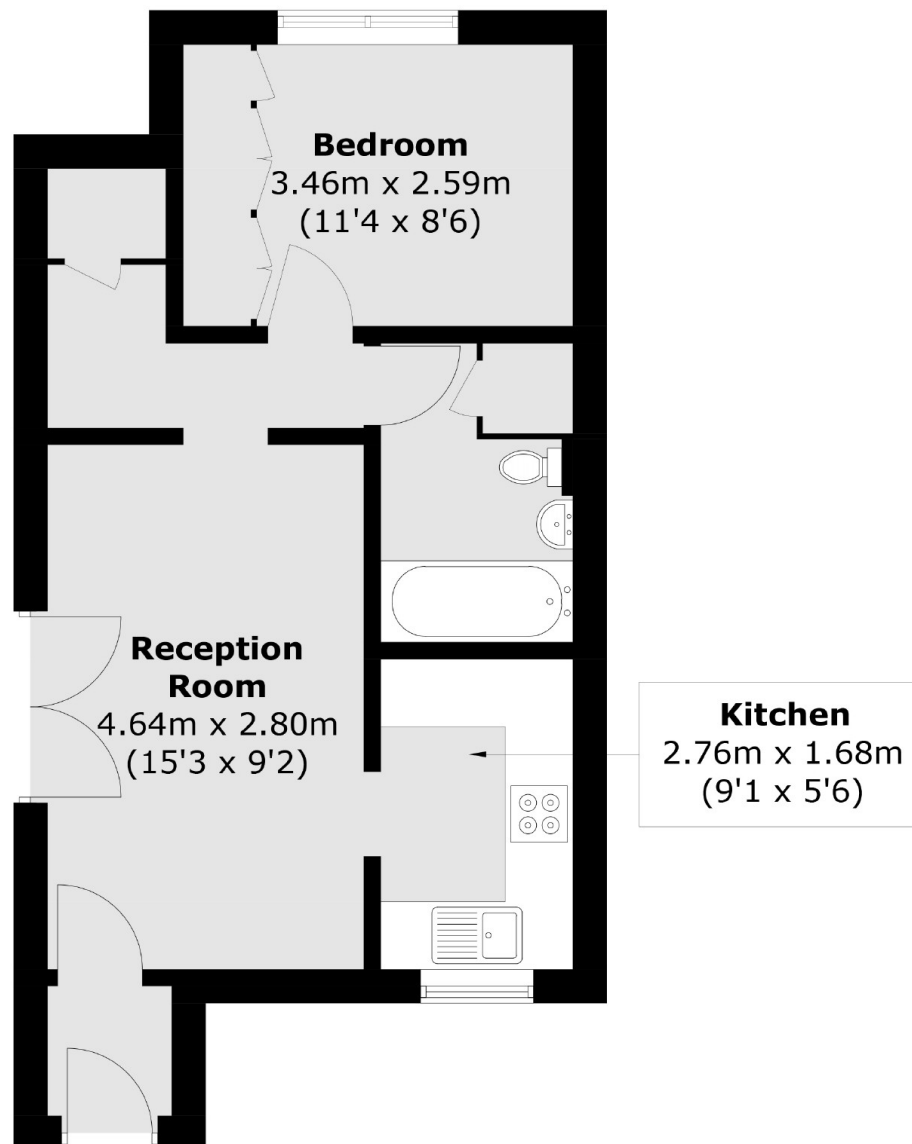
Charming one bedroom ground floor flat with the convenience of private allocated parking. This well-presented property offers comfortable living spaces, an inviting atmosphere, and easy access to amenities.

Less than three quarters of a mile from Stamford Brook tube station (District and Piccadilly lines). Askew road with its array of shops and eateries is less than 10 minutes walk away.

Features

- One Bedroom
- Long Lease
- No Onward Chain
- Allocated Parking Space
- Communal Garden
- Separate Kitchen

Holley Road,
London, W3



Total area (approx.): 38.6 sq. m (415.5 sq. ft)