



First Avenue, W3

£885,000

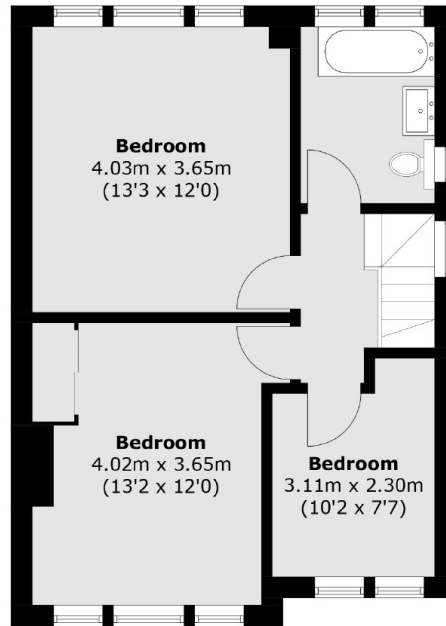
A three bedroom semi-detached home in excellent condition with driveway parking and a large west facing garden. The house has the potential to be extended (subject to consents) and will be sold chain free.

Just over half a mile away from East Acton tube station (Central line). Local bus routes to Shepherd's Bush, Hammersmith and Ealing are located close by.

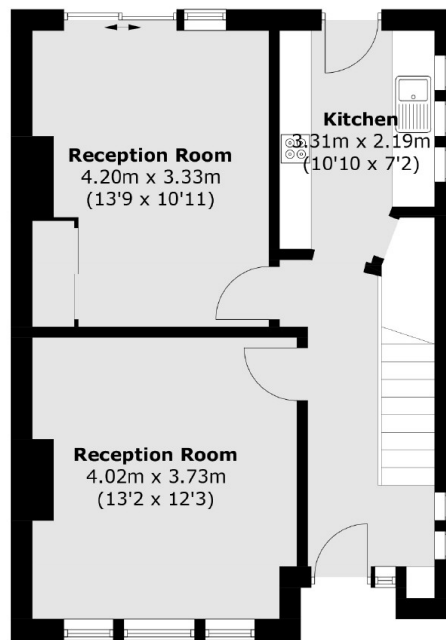
Features

- Semi-Detached
- Off-Street Parking
- No Onward Chain
- West Facing Garden
- Potential to Extend
- Side Access

First Avenue, London, W3



First Floor



Ground Floor

Total area (approx.): 92.4 sq. m (994.6 sq. ft)