



Leamington Park, W3 £349,950

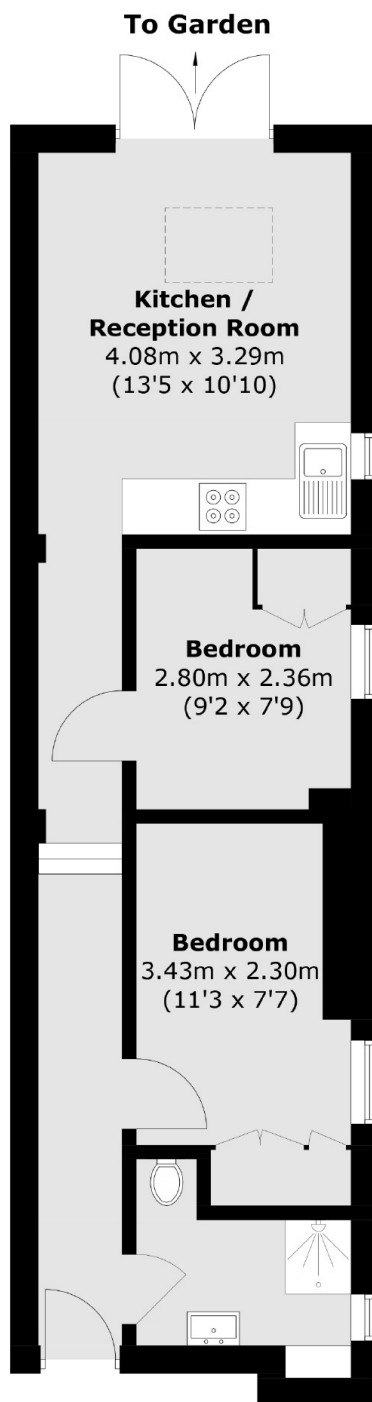
A two bedroom ground floor apartment with access to a south facing garden and off-street parking. The flat is presented in good condition throughout and will be sold with no onward chain.

Less than five minutes walk from Acton Main Line station (Elizabeth line) and less than ten minutes walk from North Acton tube station (Central line).

Features

- Two Bedrooms
- Period Conversion
- Off-Street Parking
- No Onward Chain
- Garden Access
- Close to Stations

Leamington Park, London, W3



Total area (approx.): 43.5 sq. m (468.2 sq. ft)