



Gunnersbury Lane, W3

£695,000

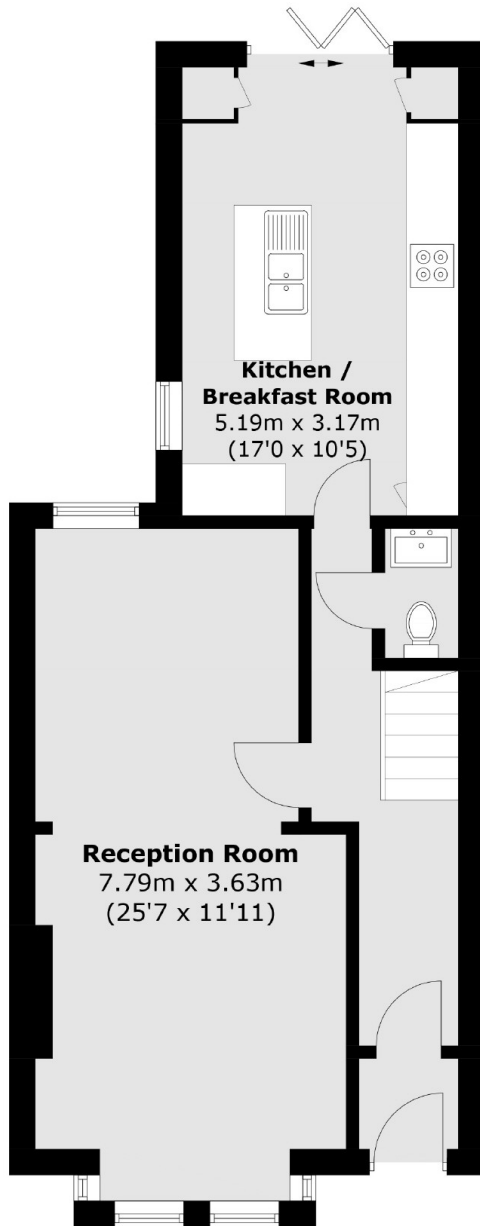
A three bedroom mid-terraced home currently arranged over two floors with the potential to extend (subject to consents). The house has just under 1,200 sq.ft of habitable space and will be sold with no onward chain.

Situated approximately 3 minutes walk from Acton Town tube station (District and Piccadilly lines). Acton Main Line (Elizabeth line) and Acton Central (Overground) are within a mile.

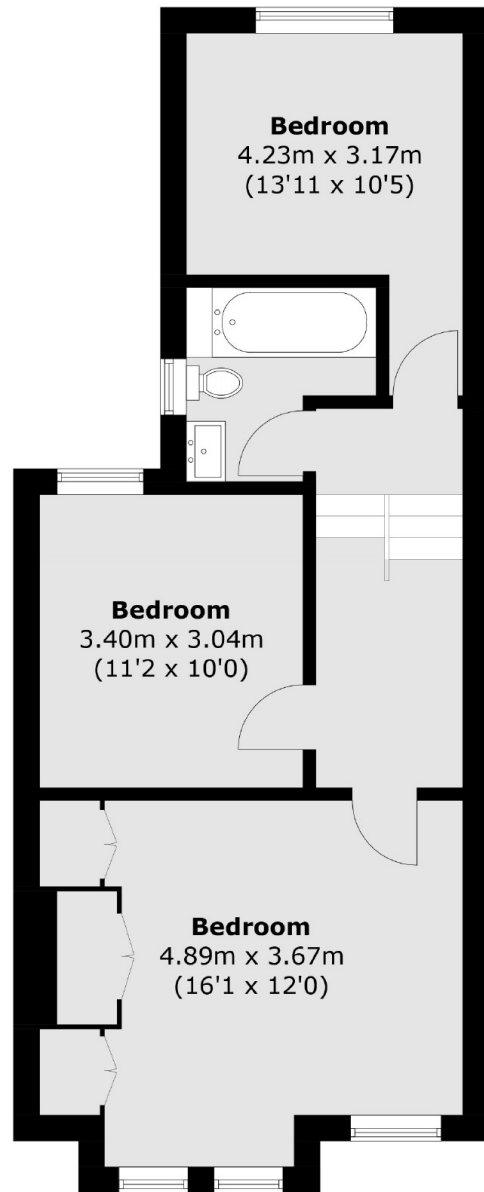
Features

Mid-Terraced
Three Bedrooms
Separate Kitchen
No Onward Chain
Close to Station
Downstairs WC

Gunnersbury Lane,
London, W3



Ground Floor



First Floor

Total area (approx.): 107.8 sq. m (1160.3 sq. ft)