

Wells House Road, NW10 £595,000

A three bedroom period house currently arranged over two floors with the potential to extend (STPP). The house has two receptions and spans circa 1,000 sq.ft.

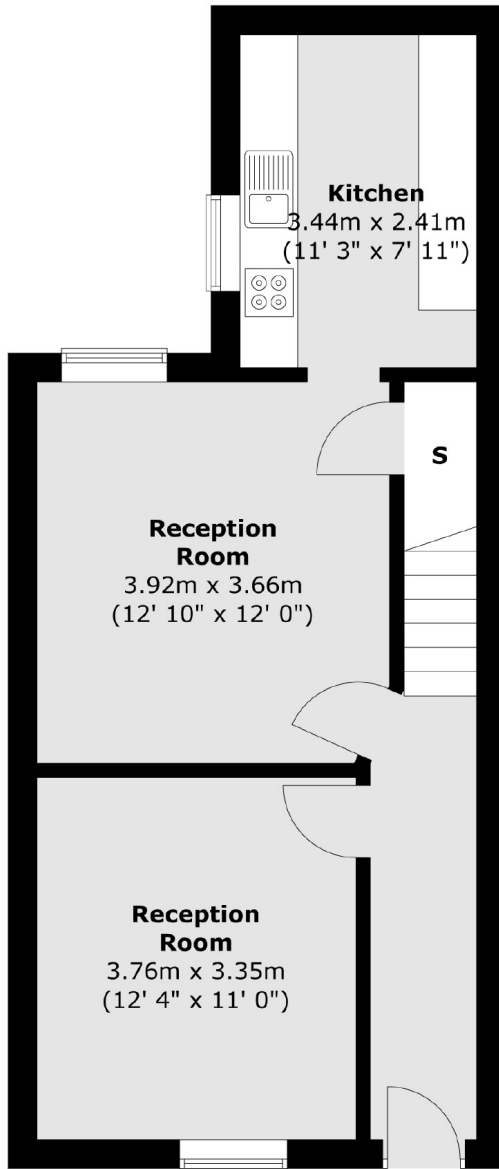
East Acton tube station (Central line), Willesden Junction (Overground) and North Acton tube station (Central line) are all within a mile.

Features

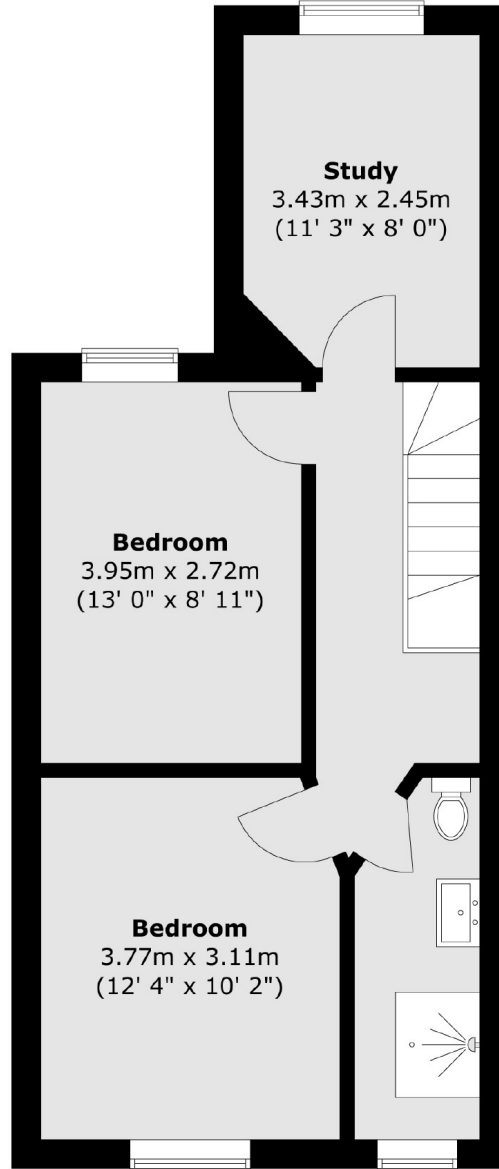
- Semi Detached House
- Three Bedrooms
- Potential To Extend (STPP)
- Two Receptions
- South Facing Garden
- No Onward Chain

Wells House Road,
London, NW10

Ground Floor



First Floor



Total area (approx.) : 92.2 sq. m (992 sq. ft)