



King Edwards Gardens, W3

£650,000

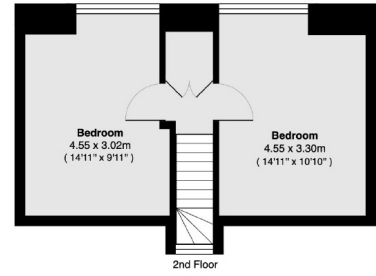
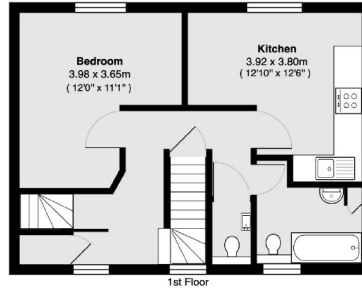
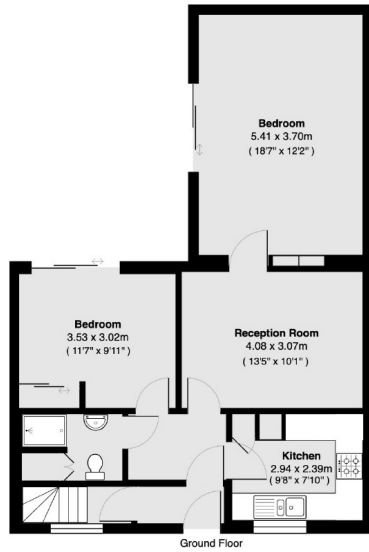
A four bedroom detached house with three ground floor reception rooms and a separate kitchen. The house has over 1,500 sq.ft of internal living space and will be sold chain free.

Just over a quarter of a mile from Ealing Common tube station (District and Piccadilly lines) and half a mile from Acton Town station.

Features

- Detached House
- Four Bedrooms
- Two Bathrooms
- Separate WC
- No Onward Chain
- Over 1,500 sq.ft

King Edwards Gardens, London, W3



Total area 142.2 sq m (approx) (1531 sq ft approx)