



Davis Road, W3

£459,950

A ground floor two bedroom apartment spanning just under 800 sq.ft with a garden and an outbuilding which could be utilised as a home office, a children's play area or storage.

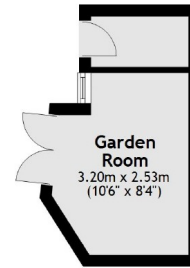
Located a short walk from Askew Road's shops and eateries. Stamford Brook and East Acton tube stations are both within a mile and there are excellent bus routes located nearby.

Features

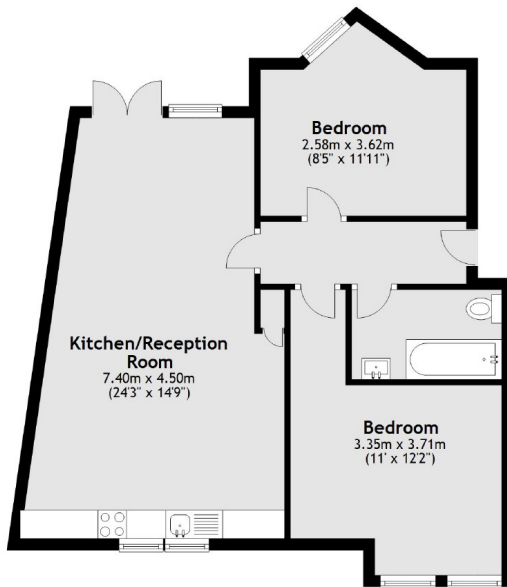
- Two Double Bedrooms
- Ground Floor
- Private Garden
- No Onward Chain
- Allocated Parking
- Just Under 800 sq.ft

Davis Road,
London, W3

Ground Floor



Ground Floor



Total area: approx. 70.7 sq. metres (760.9 sq. feet)