



The Ridgeway, W3

£700,000

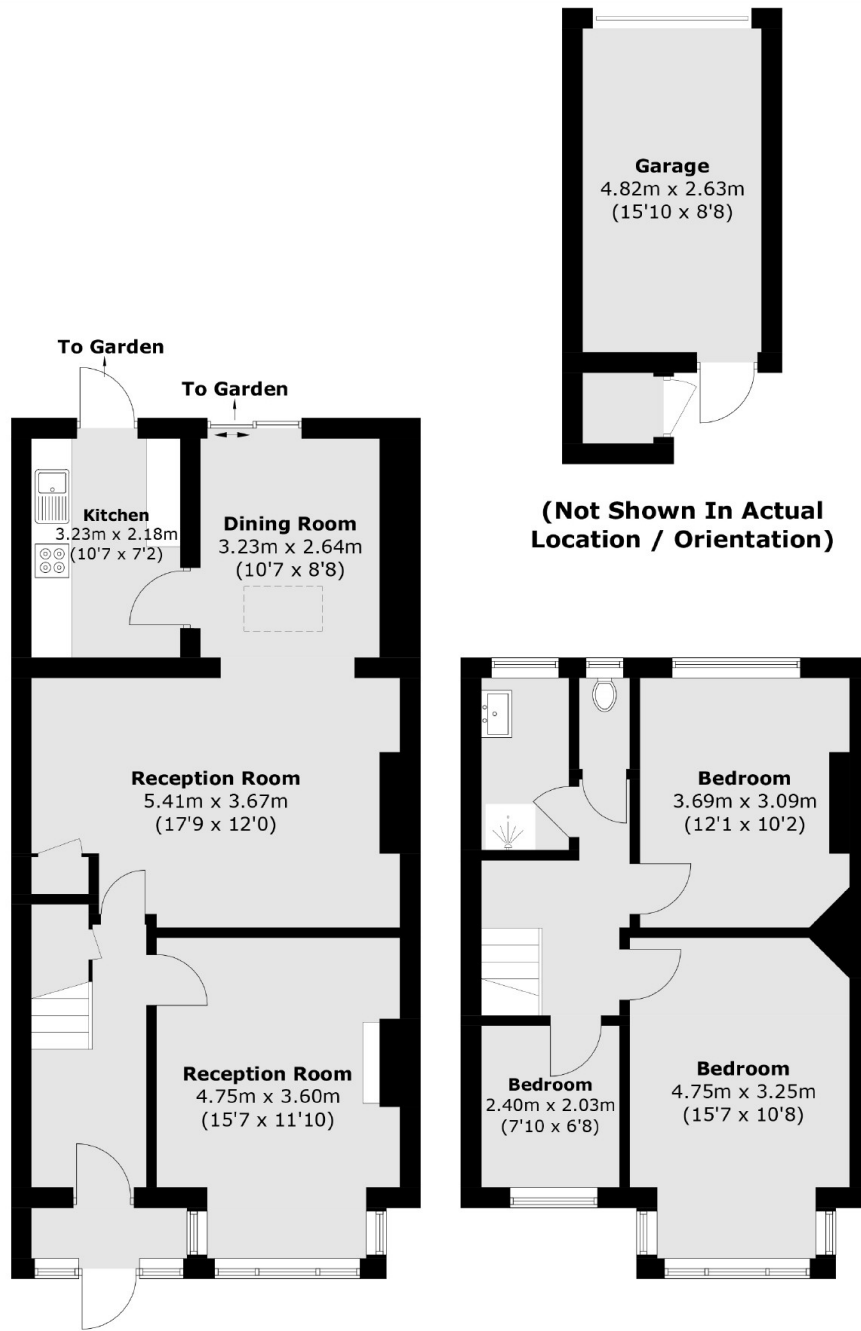
A three bedroom home in need of modernisation throughout and arranged over two floors. This residence spans over 1,100 sq.ft, has potential to be extended (subject to consents) and will be sold with no onward chain.

Situated in the sought after Gunnersbury Triangle conservation area and under 0.2 miles to Acton Town station (District and Piccadilly line).

Features

- Three Bedrooms
- Gunnersbury Triangle Location
- Potential to Extend (STPP)
- Over 1,100 sq.ft
- No Onward Chain
- Off-Street Parking

The Ridgeway, London, W3



Ground Floor

First Floor

Total area (approx.): 108.8 sq. m (1171.1 sq. ft)
Outbuilding (approx.): 14.4 sq. m (155.0 sq. ft)

Dexters

Acton
171 High Street
London
W3 6LP
Sales
020 8896 2112

Energy Rating: D. We aim to make our particulars both accurate and reliable. However they are not guaranteed; nor do they form part of an offer or contract. If you require clarification on any points then please contact us, especially if you're traveling some distance to view. Please note that appliances and heating systems have not been tested and therefore no warranties can be given as to their good working order.

 **RICS** Regulated
Estate Agent
and Letting Agent

dexters.co.uk