



Horn Lane, W3

£800,000

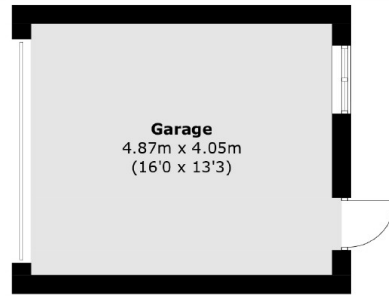
A family home with a mock tudor finish, this home has five bedrooms, three receptions and three bathrooms. Arranged over three floors, it has a west facing garden and will be sold with no onward chain.

Located under a quarter mile to Acton Main Line (Elizabeth line), and under a half mile to North Acton Station (Central line).

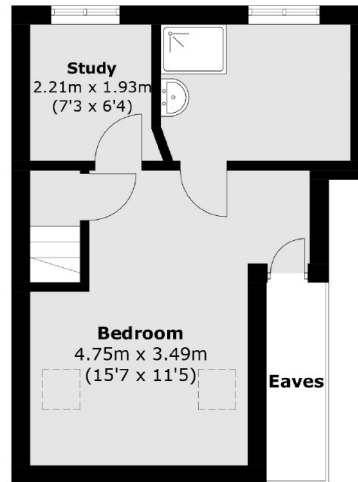
Features

Five Bedrooms
Three Bathrooms
No Onward Chain
Over 1,700 sq.ft
Three Receptions
Downstairs WC

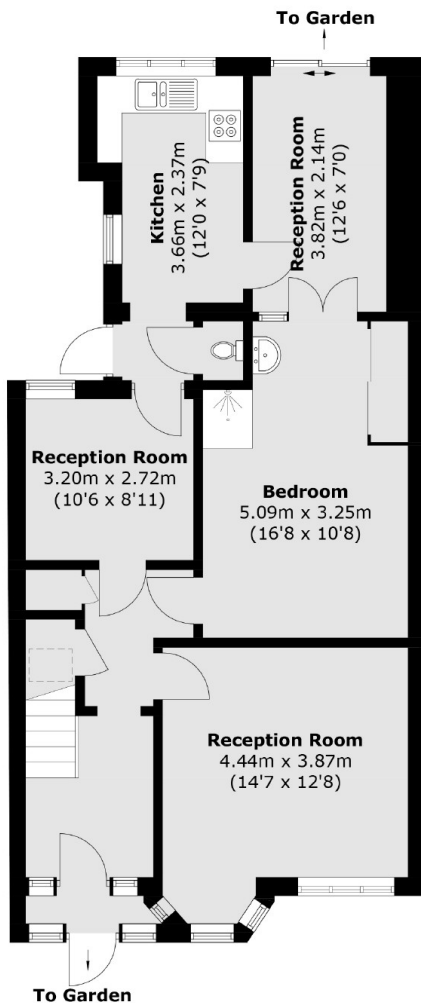
Horn Lane, London, W3



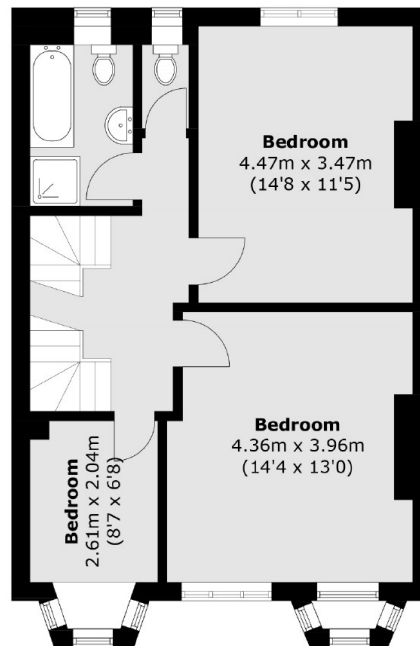
(Not Shown In Actual Location / Orientation)



Second Floor



Ground Floor



First Floor

Total area (approx.): 158.8 sq. m (1,709.3 sq. ft)
(Excluding Eaves)

Garage area : 19.8 sq. m (213.1 sq. ft)