



## Glendun Road, W3

£875,000

A semi-detached three bedroom house currently arranged over two floors with vast potential to substantially extend (STPP). The house has off-street parking and will be sold chain free.

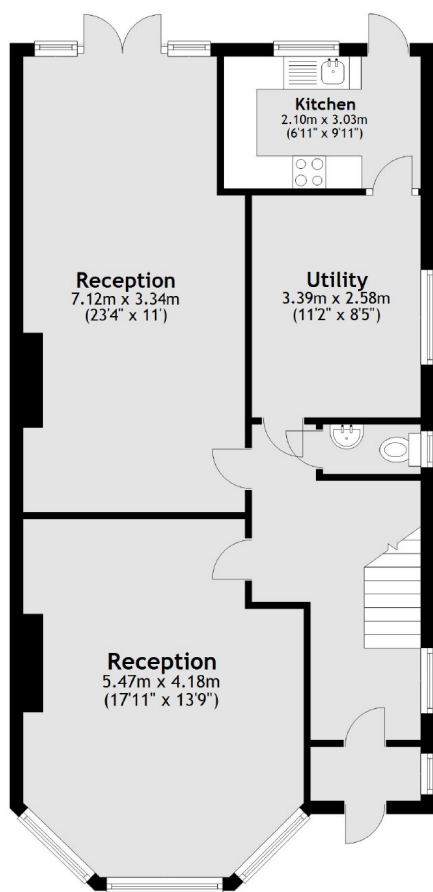
Glendun Road is less than half a mile from East Acton tube (Central line) and just over half a mile from Acton Central station (Overground).

### Features

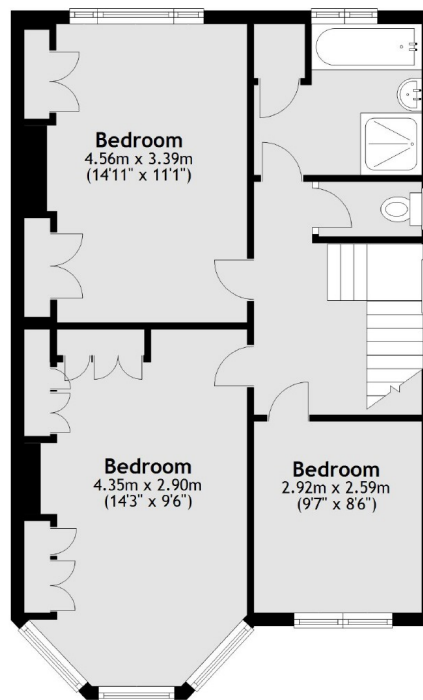
Three Bedrooms  
Two Receptions  
Potential to Extend  
No Onward Chain  
Driveway Parking  
Over 1,400 sq.ft

# Glendun Road, London, W3

Ground Floor



First Floor



Total area: approx. 130.2 sq. metres (1401.8 sq. feet)