



Glendun Road, W3

£910,000

A semi-detached three bedroom house currently arranged over two floors with vast potential to substantially extend (STPP). The house has off-street parking and will be sold chain free.

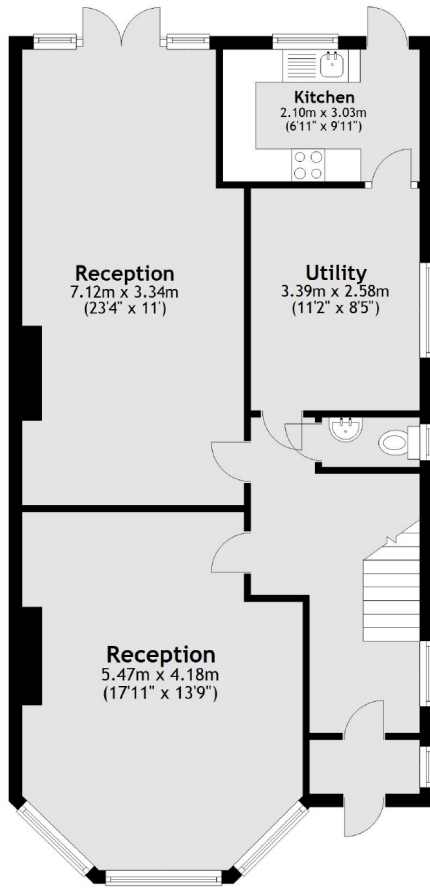
Glendun Road is less than half a mile from East Acton tube (Central line) and just over half a mile from Acton Central station (Overground).

Features

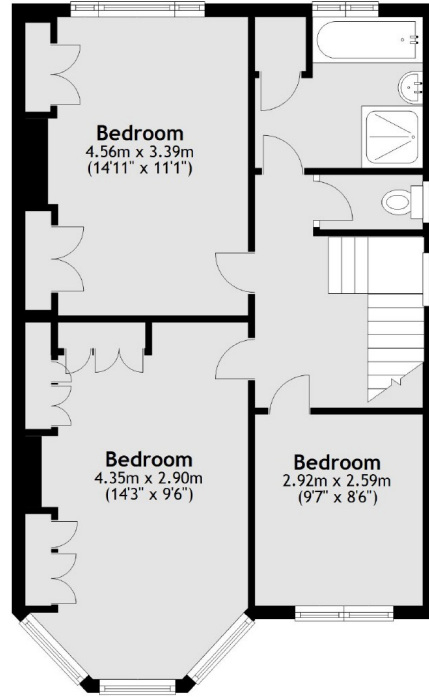
Three Bedrooms
Two Receptions
Potential to Extend
No Onward Chain
Driveway Parking
Over 1,400 sq.ft

Glendun Road, London, W3

Ground Floor



First Floor



Total area: approx. 130.2 sq. metres (1401.8 sq. feet)