



Messaline Avenue, W3

£1,850,000

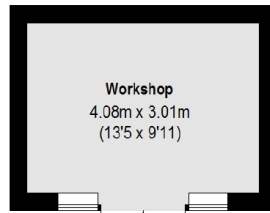
A semi-detached Edwardian residence with over 2,700 sq.ft of internal space. The house is arranged over three floors with an additional basement level currently utilised as a games room. The house has a large west facing garden and driveway parking.

Less than 5 minutes walk from Acton Main Line station (Elizabeth line) and 10 minutes walk from Acton Central station (Overground).

Features

- Six Bedrooms
- Three Bathrooms
- Off-Street Parking
- Garden Outbuilding
- West Facing Garden
- Basement

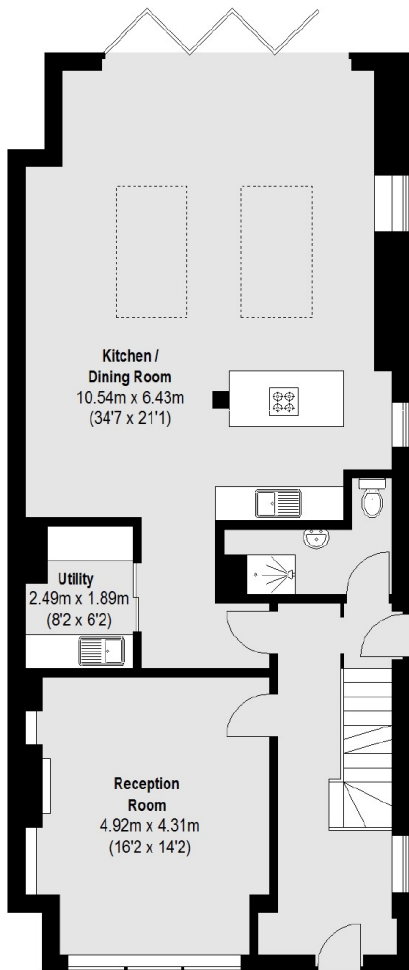
Messaline Avenue, London, W3



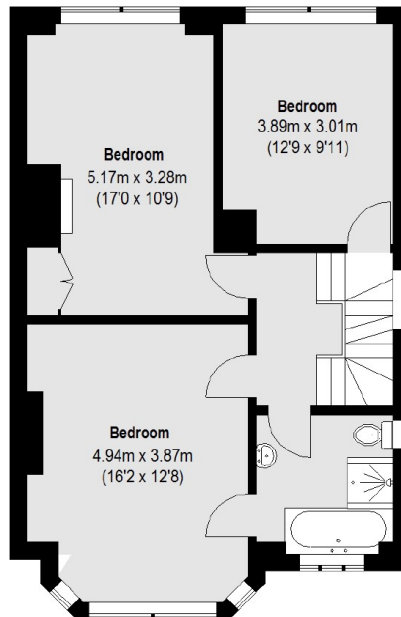
(Not Shown In Actual
Location / Orientation)



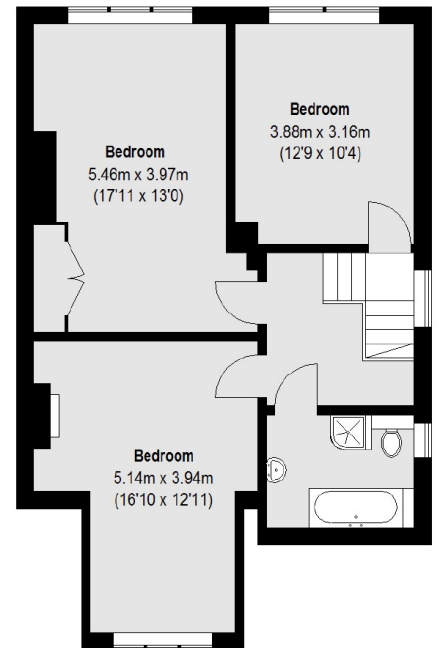
Basement



Ground Floor



First Floor



Second Floor

Total area (approx.): 251.51 sq. m (2707 Sq. ft)
Workshop: 12.62 sq. m (136 Sq. ft)