



## Shaftesbury Gardens, NW10

£295,000

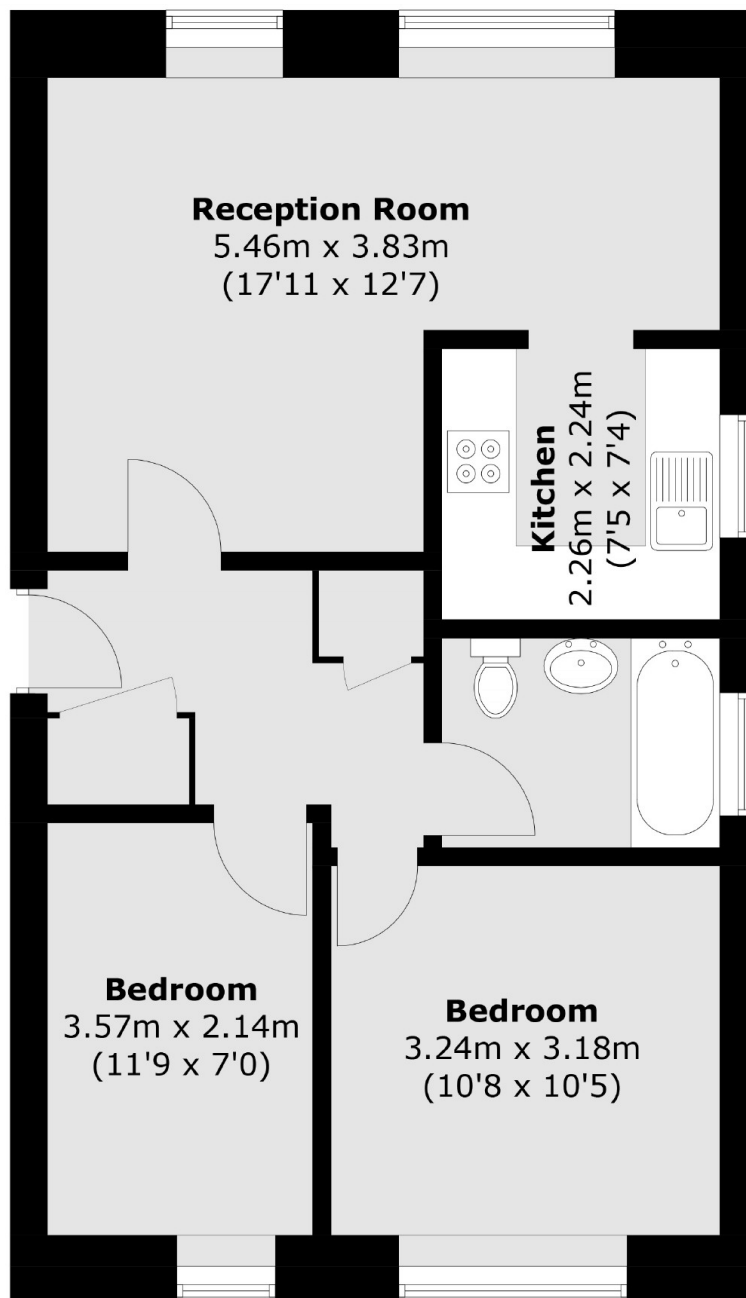
A two bedroom flat situated within the popular Shaftesbury Gardens development. The flat comes with an allocated parking space and has just under 600 sq.ft of living space.

Half a mile from North Acton tube station (Central line) and Willesden Junction station (Bakerloo and Overground lines). The 266 bus stops close by.

### Features

- Two Bedrooms
- Low Service Charge
- No Onward Chain
- Allocated Parking
- Long Lease
- Private Development

# Shaftesbury Gardens, London, NW10



Total area (approx.): 52.7 sq. m (567.2 sq. ft)

## Dexters

Acton  
170 High Street  
London  
W3 6QZ  
Sales  
020 8896 2112

Energy Rating: C. We aim to make our particulars both accurate and reliable. However they are not guaranteed; nor do they form part of an offer or contract. If you require clarification on any points then please contact us, especially if you're traveling some distance to view. Please note that appliances and heating systems have not been tested and therefore no warranties can be given as to their good working order.

 **RICS** | Regulated  
Estate Agent  
and Letting Agent

[dexters.co.uk](https://www.dexters.co.uk)