

ST MARKS ROAD



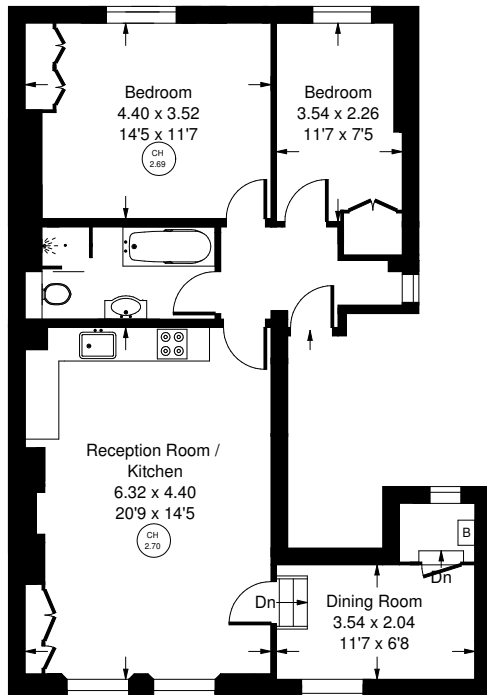


St Marks Road, W10

A bright and spacious flat in a period conversion in this leafy corner of North Kensington. This two bedroom second floor flat, circa 784 sq ft, has plenty of character, with period features, fabulous decor and open views. There is a separate dining room off the living space which could be used as a third bedroom or study/home office. St Marks Road is a short walk away from the bustle of Golborne Road that includes the iconic Lisboa Patisserie, Strakers restaurant and the weekly market. Latimer Road or Ladbroke Grove underground stations are close by.



Approx. Gross Internal Area
= 72.8 sq m / 784 sq ft



Second Floor



Whilst every attempt has been made to ensure the accuracy of the floor plan, measurements are approximate and not to scale. No guarantee is given on the total square footage of the property quoted on the plan. Figures given are for guidance. Plan is for illustration purposes only, not to be used for valuations.



St Marks Road, W10 - Share of Freehold

Local Authority - **Royal Borough of Kensington & Chelsea**

- Two bedrooms
- Reception rooms
- Third bedroom/dining room
- Close to Portobello and Golborne road
- Period features
- EPC Rating: C
- Council Tax Band: