



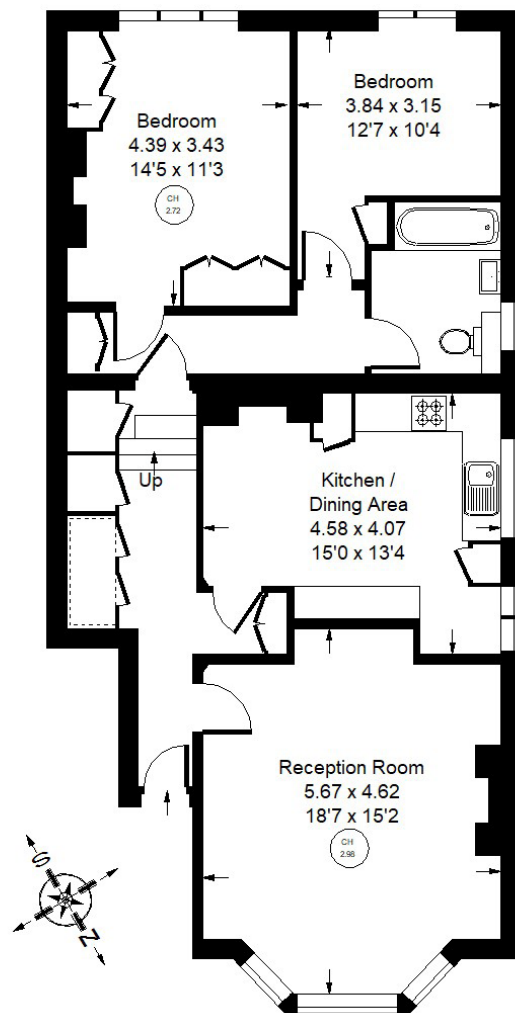
ST. QUINTIN AVENUE



St. Quintin Avenue, W10

A great flat on the raised ground floor of a beautiful Edwardian house in North Kensington. This two bedroom flat benefits from high ceilings, large bay windows and many period features, with an impressive reception room, eat- in-kitchen, two bedrooms at the rear, overlooking gardens and green space. St Quintin Avenue is located within walking distance of Latimer Road underground station, the buses and underground on Ladbroke Grove as well as the fantastic shops and restaurants on Portobello Road and Golborne Road. Westfield shopping centre and the White City development, including Soho House, is also close by.





Raised Ground Floor

Approx. Gross Internal Area
= 89.4 sq m / 962 sq ft



St. Quintin Avenue, W10 - Leasehold

Local Authority - **Royal Borough of Kensington & Chelsea**

- Two bedrooms
- Reception room
- High ceilings
- Period features
- Council Tax Band: F
- EPC Rating: C



Whilst every attempt has been made to ensure the accuracy of the floor plan, measurements are approximate and not to scale. No guarantee is given on the total square footage of the property quoted on the plan. Figures given are for guidance. Plan is for illustration purposes only, not to be used for valuations.