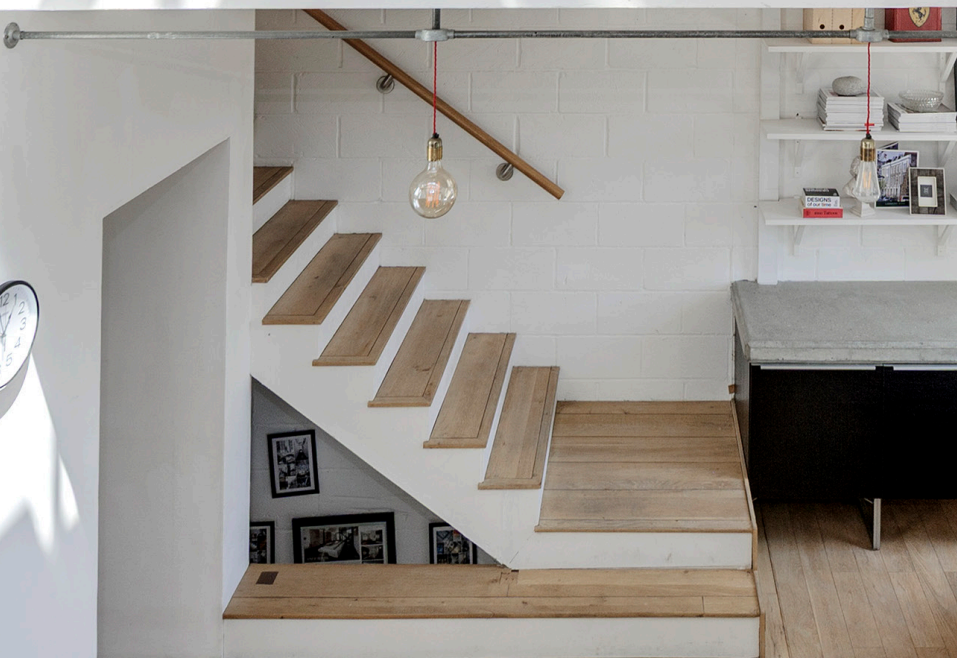




HEWER STREET



Hewer Street, W10

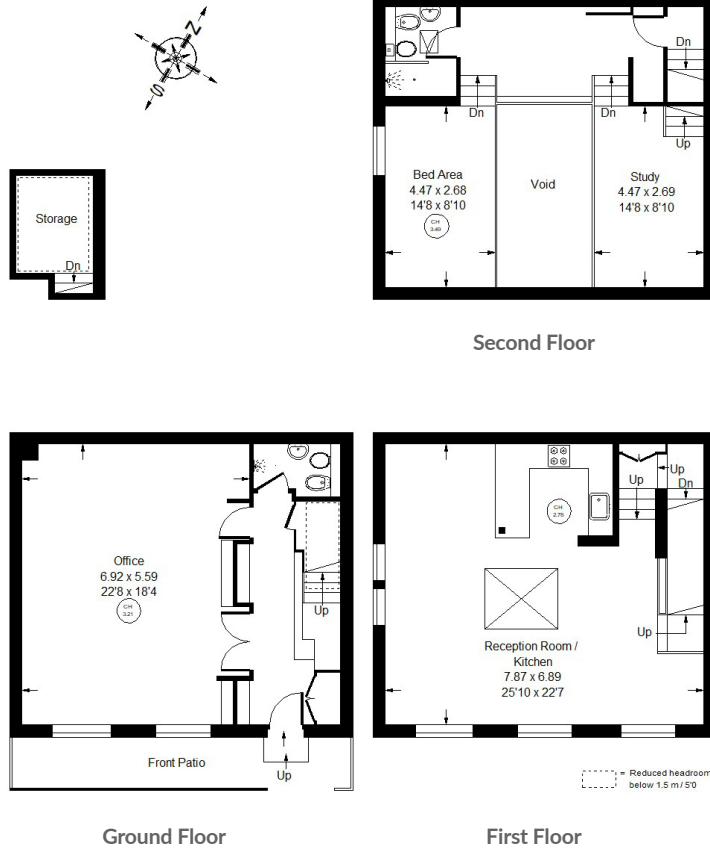
Forming part of an original dairy this loft-style house offers an exciting and extremely flexible living space of approximately 1,669 sq ft. The ground floor has high ceilings, a large space currently used as a work studio, and a shower room. The first floor is flooded with natural light thanks to the large windows, high ceilings and the roof lantern in the centre of the building. The reception room and kitchen has to a mezzanine bedroom space and adjacent study area which could potentially be used as a second bedroom. Hewer street located close to Portobello Road and Golborne Road, with their excellent restaurants, delis, antique shops and galleries. The many offerings of Notting Hill are within easy reach to the south, whilst Ladbroke Grove Underground station (Circle and Hammersmith & City Line) is a short walk.







Approx. Gross Internal Area
 = 155.1 sq m / 1669 sq ft
 (Excluding Void & External Storage)



Hewer Street, W10 - Freehold

Local Authority - **Royal Borough of Kensington & Chelsea**

- Two bedrooms
- Two bathrooms
- Two receptions
- Loft style house
- High ceilings
- Council Tax Band: C
- EPC Rating: D



Whilst every attempt has been made to ensure the accuracy of the floor plan, measurements are approximate and not to scale. No guarantee is given on the total square footage of the property quoted on the plan. Figures given are for guidance. Plan is for illustration purposes only, not to be used for valuations.