



TREADGOLD STREET



## Treadgold Street, W10

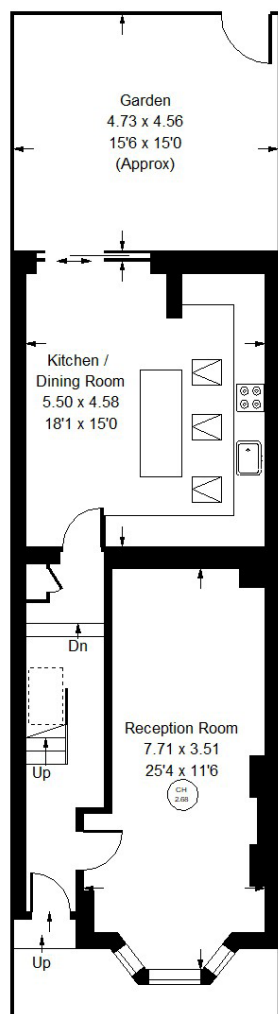
A delightful mid terraced house in this quiet location in Notting Hill. This refurbished house offers fantastic family accommodation with a bright reception room with wooden floors and a feature fireplace, a large kitchen family room with patio doors leading to a south-facing garden. There are four double bedrooms, and two bathrooms, one being en-suite. Treadgold Street is located within easy reach of Holland Park, Notting Hill, Portobello Road, and the Westfield Shopping Centre.



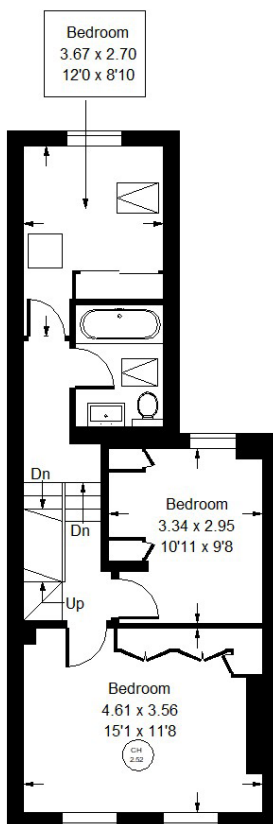
THIS IMAGE HAS BEEN VIRTUALLY STYLED



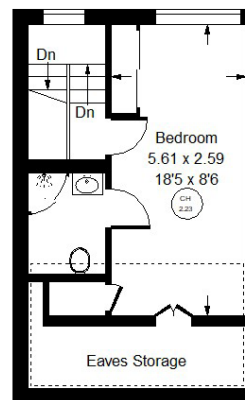
THIS IMAGE HAS BEEN VIRTUALLY STYLED



Ground Floor

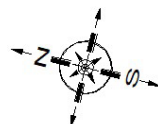


First Floor



Second Floor

Approx. Gross Internal Area = 131.7 sq m / 1418 sq ft  
Eaves Storage = 5.3 sq m / 57 sq ft  
Total = 137 sq m / 1475 sq ft



--- = Reduced headroom  
below 1.5 m / 5'0"



## Treadgold Street, W10 - Freehold

Local Authority - **Royal Borough of Kensington & Chelsea**

- Four bedrooms
- Two Bathrooms
- South-facing garden
- Newly refurbished
- Council Tax Band: F
- EPC Rating: C



Whilst every attempt has been made to ensure the accuracy of the floor plan, measurements are approximate and not to scale. No guarantee is given on the total square footage of the property quoted on the plan. Figures given are for guidance. Plan is for illustration purposes only, not to be used for valuations.