



WESLEY SQUARE



Wesley Square, W10

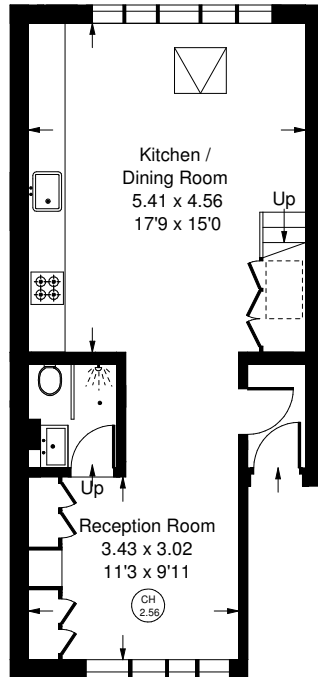
Overlooking beautifully kept communal gardens is this duplex apartment in a popular Notting Hill location. Arranged on the second and third floors, the flat has a modern design with an open-plan living room and kitchen. The double bedroom is bright with vaulted ceilings. Wesley Square is a private development located on Lancaster Road, in close proximity to the fantastic boutiques, cafes and restaurants of Golborne Road and Portobello Road along with Ladbroke Grove underground station for the Hammersmith & City and Circle line.



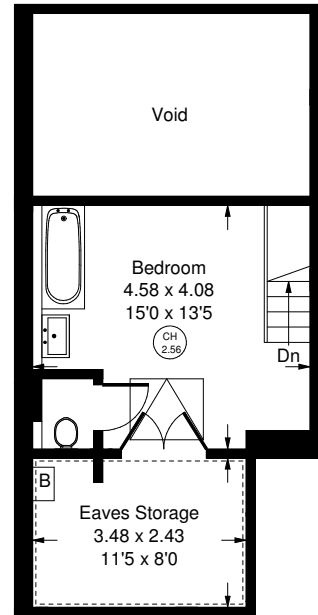
Approx. Gross Internal Area = 74.4 sq m / 791 sq ft
 Eaves Storage = 8.6 sq m / 92 sq ft
 Total = 71.1 sq m / 765 sq ft (Excluding Void)



--- = Reduced headroom
 below 1.5 m / 5'0"



Second Floor



Third Floor



Wesley Square, W10 - Share of Freehold

Local Authority - **Royal Borough of Kensington & Chelsea**

- Split-level apartment
- Stunning communal gardens
- Lateral living space
- Vaulted ceilings
- Notting Hill location
- Council Tax Band: D
- Remaining Lease: 953 years



Whilst every attempt has been made to ensure the accuracy of the floor plan, measurements are approximate and not to scale. No guarantee is given on the total square footage of the property quoted on the plan. Figures given are for guidance. Plan is for illustration purposes only, not to be used for valuations.