



ST CHARLES SQUARE

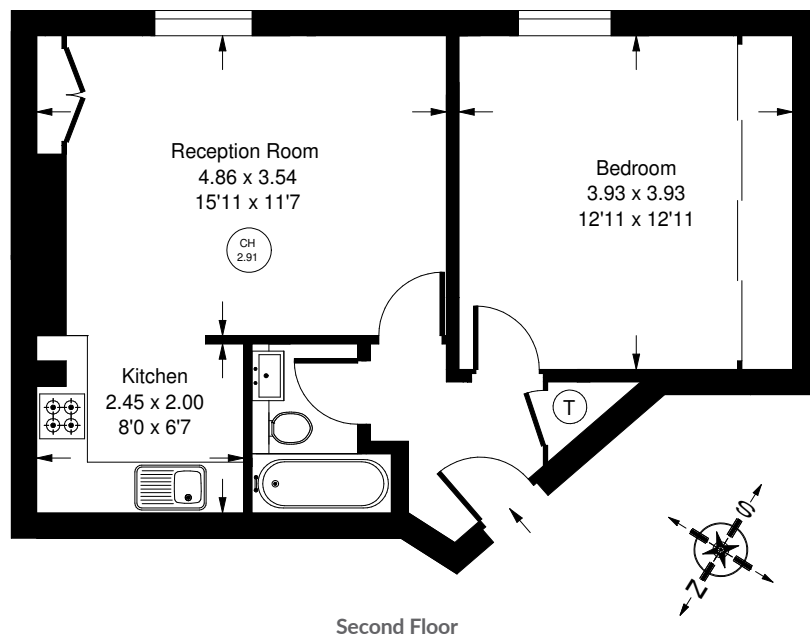


St Charles Square, W10

A very well-presented second floor flat, located in the charming residential area of North Kensington. This period property features traditional architecture, with large windows enjoying natural light. The flat is neatly configured and the newly refurbished semi-open plan kitchen/living space is particularly well considered. St Charles Square is conveniently situated near Ladbroke Grove, Golborne Road and Portobello Road, perfect for the vibrant attractions of Notting Hill. With just over a 5 minute walk away from St Charles Square and Ladbroke Grove tube stations for Circle and Hammersmith & City lines.



Approx. Gross Internal Area = 46.3 sq m / 498 sq ft



St Charles Square, W10 - Leasehold

Local Authority - **Royal Borough of Kensington & Chelsea**

- Second floor apartment
- One double bedroom
- Reception room
- Newly finished
- Natural lighting
- Close to Portobello Road
- Council Tax Band: D
- Remaining Lease: 84 years



Whilst every attempt has been made to ensure the accuracy of the floor plan, measurements are approximate and not to scale. No guarantee is given on the total square footage of the property quoted on the plan. Figures given are for guidance. Plan is for illustration purposes only, not to be used for valuations.