

# PANGBOURNE AVENUE







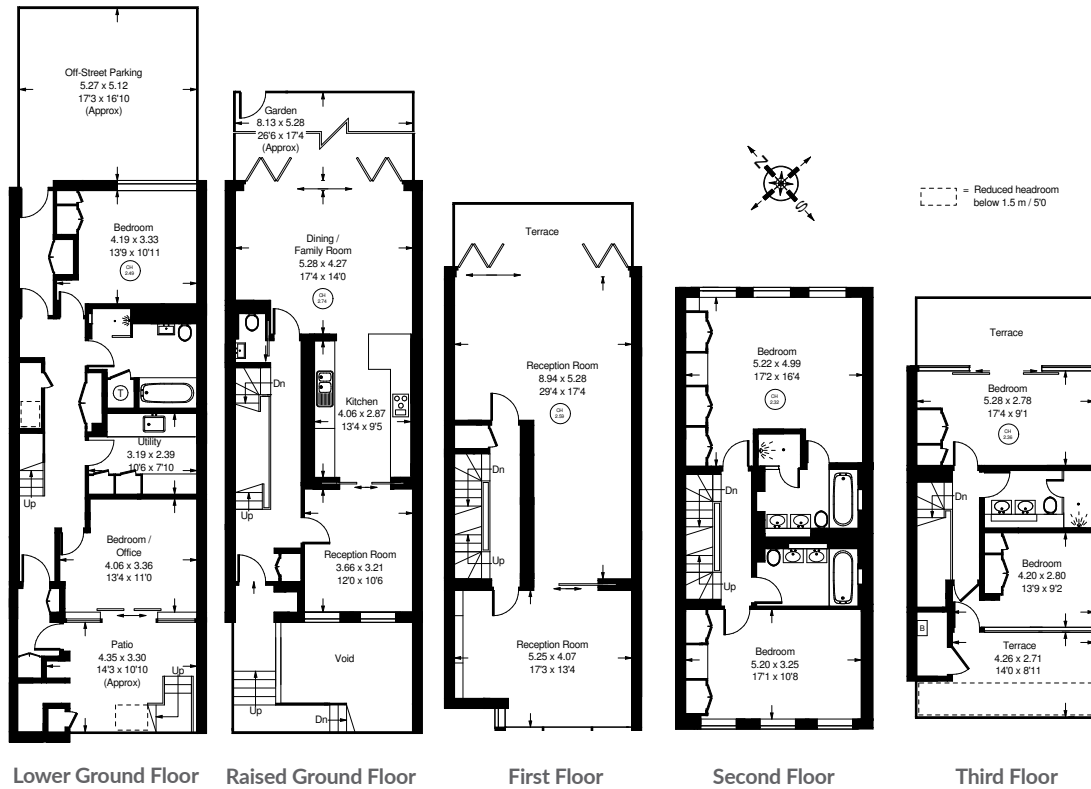
## Pangbourne Avenue, W10

A large contemporary house with stunning views over Kensington Memorial Park and secure underground parking. The house is laid out over five floors and the extensive accommodation (circa 3,300 square feet) offers six bedrooms, five bathrooms and four reception rooms. There are three terraces and a secluded patio garden along with secure underground parking with space for two cars and an electrical car charger. Pangbourne Avenue is located in the Royal Borough of Kensington & Chelsea and is close to Ladbroke Grove, Portobello Road, Notting Hill and the Westfield Shopping Centre.





Approx. Gross Internal Area = 307.1 sq m / 3306 sq ft  
 Bin Cupboard = 1.7 sq m / 18sq ft  
 Total = 308.8 sq m / 3324 sq ft



## Pangbourne Avenue, W10 - Freehold

Local Authority - **Royal Borough of Kensington & Chelsea**

- Six bedrooms
- Five bathrooms
- Four reception rooms
- Three terraces
- Paved garden
- Underground parking
- Council tax band: H
- EPC Rating: B



Whilst every attempt has been made to ensure the accuracy of the floor plan, measurements are approximate and not to scale. No guarantee is given on the total square footage of the property quoted on the plan. Figures given are for guidance. Plan is for illustration purposes only, not to be used for valuations.