



OXFORD GARDENS

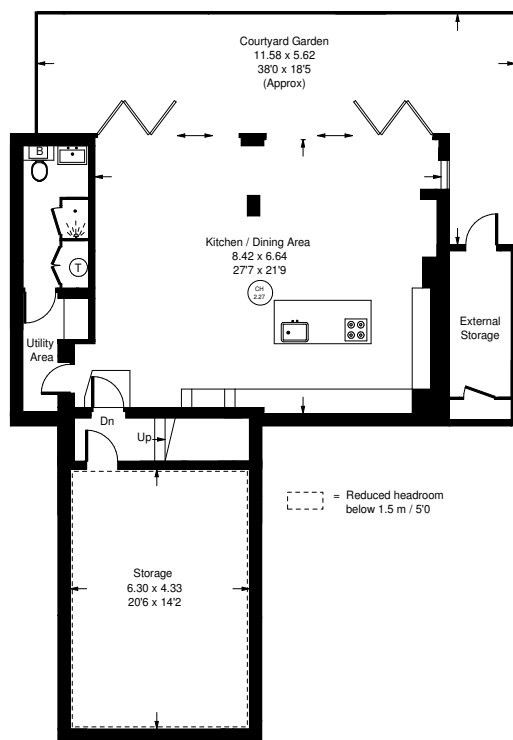


Oxford Gardens, W10

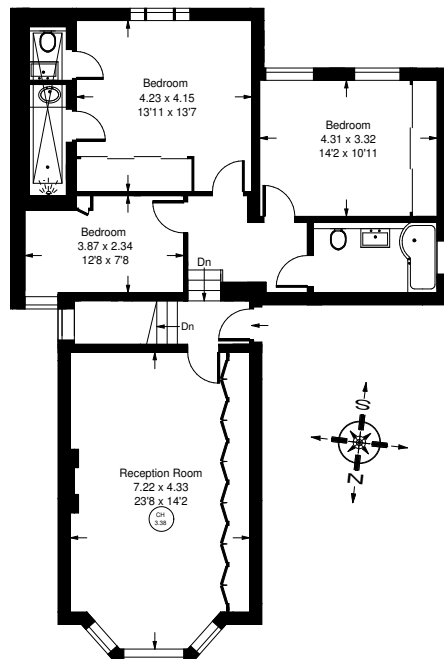
An elegant ground and garden apartment in this period house in North Kensington. The living space consists of a grand reception room on the ground floor and a lateral kitchen family room on the lower ground floor with bi-fold doors to a south-facing courtyard garden. The three bedrooms and bathrooms are at the rear of the ground floor. The flat also benefits a large internal and external storage space, utility room and guest WC. Oxford Gardens is a pretty tree-lined street in the heart of North Kensington, perfectly located for access to Portobello Road, Golborne Road, Notting Hill, Holland Park and the Westfield Shopping Centre.



Approx. Gross Internal Area = 188 sq m / 2024 sq ft
 Approx. Gross Internal Area = 167.6 sq m / 1804 sq ft



Lower Ground Floor



Ground Floor



105 Oxford Gardens, W10 - Share of Freehold Local Authority - **Royal Borough of Kensington & Chelsea**

- Three bedrooms
- Two bathrooms
- South facing courtyard
- Period conversion
- Council Tax Band: G



Whilst every attempt has been made to ensure the accuracy of the floor plan, measurements are approximate and not to scale. No guarantee is given on the total square footage of the property quoted on the plan. Figures given are for guidance. Plan is for illustration purposes only, not to be used for valuations.