



OAKWORTH ROAD

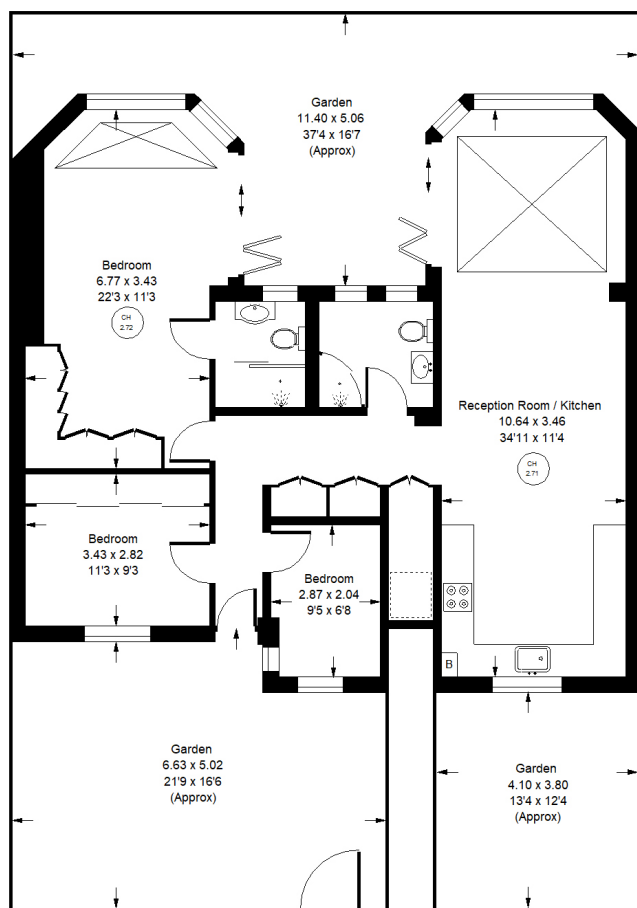


## Oakworth Road, W10

A recently refurbished, lateral flat with a south-facing garden in this quiet enclave next to Kensington Memorial Park. Arranged on the ground floor, with large reception room with an open-plan kitchen with the addition of a sun room on to the garden. The large principal bedroom with en suite shower room has also been extended to give access to the garden. There are two further double bedrooms and bathroom. Oakworth Road is located in the heart of North Kensington and is within easy reach of Portobello, Golborne Road, Westfield Shopping Centre, whilst being adjacent to Kensington Memorial Park. It is equidistant to Latimer road, Ladbroke Grove and White City underground stations.







Approx. Gross Internal Area  
= 1056 sq ft / 98.1 sq m

Ground Floor



## Oakworth Road, W10 - Leasehold

Local Authority **Royal Borough of Kensington & Chelsea**

- Two bedrooms
- Two bathrooms
- Double reception room
- South-facing patio
- Recently refurbished
- EPC Rating: C
- Council Tax Band: D



Whilst every attempt has been made to ensure the accuracy of the floor plan, measurements are approximate and not to scale. No guarantee is given on the total square footage of the property quoted on the plan. Figures given are for guidance. Plan is for illustration purposes only, not to be used for valuations.