

NORLAND SQUARE



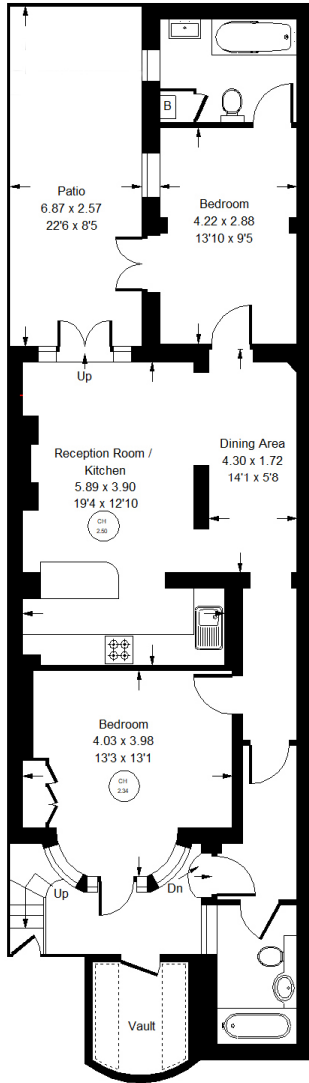


Norland Square, W11

A wonderful garden flat on the west side of this prestigious communal garden square in Holland Park. This lovely apartment has two double bedrooms, excellent reception space and a sunny west-facing patio garden together with access to the beautiful square gardens. Holland Park tube station as well as the shops, cafes and restaurants on Holland Park Avenue and Clarendon Cross are moments away. Holland Park itself is only a short walk and Westfield and Notting Hill are within striking distance.

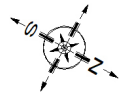






Lower Ground Floor

Approx. Gross Internal Area
 = 74.5 m sq / 802 sq ft
 Vault = 3.9 m sq / 42 sq ft
 Total = 78.4 m² / 844 ft²



Norland Square, W11 - Share of Freehold Local Authority **Royal Borough of Kensington & Chelsea**

- Two bedrooms
- Two bathrooms
- West-facing patio garden
- Communal garden
- EPC Rating: D
- Council Tax Band: F



Whilst every attempt has been made to ensure the accuracy of the floor plan, measurements are approximate and not to scale. No guarantee is given on the total square footage of the property quoted on the plan. Figures given are for guidance. Plan is for illustration purposes only, not to be used for valuations.