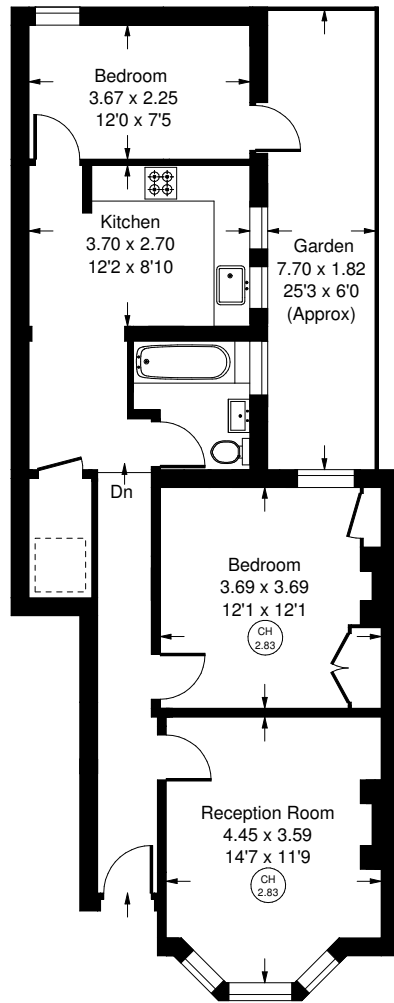




Eynham Road, W12



Ground Floor



Approx. Gross Internal Area
= 67 m² / 721 ft²



Eynham Road, W12 Leasehold

Local Authority **Hammersmith & Fulham**

- Two Bedrooms
- Beautifully Refurbished
- Secluded Patio Garden
- Kitchen Dining Room
- Within Close Reach of the Underground
- EPC Rating: D
- Council Tax Band: D
- Remaining Lease: 153 years



Whilst every attempt has been made to ensure the accuracy of the floor plan, measurements are approximate and not to scale. No guarantee is given on the total square footage of the property quoted on the plan. Figures given are for guidance. Plan is for illustration purposes only, not to be used for valuations.

