







## Barlby Road, W10

A spacious purpose built garden flat benefiting from its own entrance and large south-facing garden. This three bedroom property, with wood flooring comprises of an entrance hall, reception room, separate kitchen, three bedrooms, a family bathroom and benefits from front and rear gardens. Barlby is located in the heart of North Kensington and is within easy reach of Portobello, Golborne Road, Westfield Shopping Centre, whilst being a short stroll away from Kensington Memorial Park. It is equidistant to Latimer Road, Ladbroke Grove and White City underground stations.

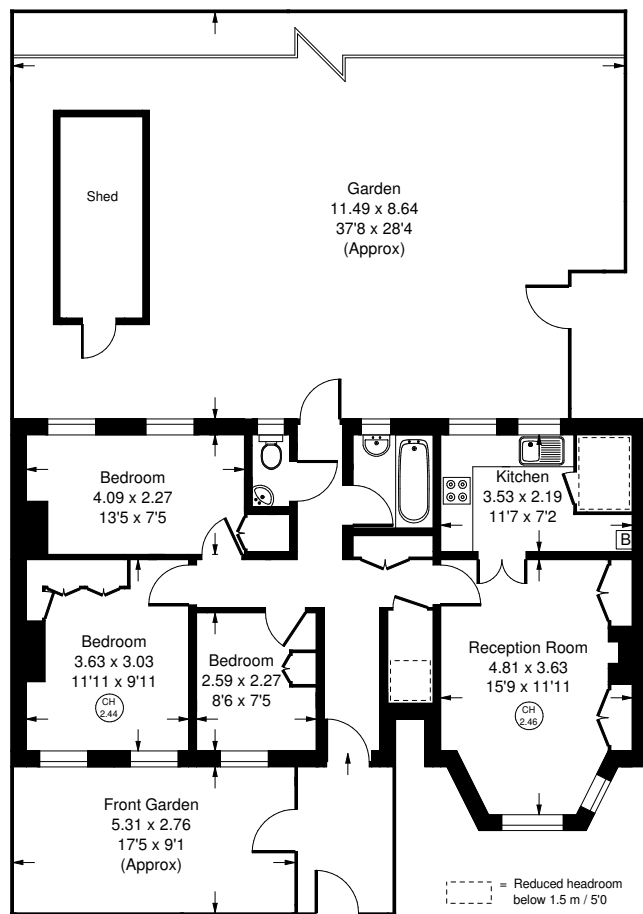












Approx. Gross Internal Area  
= 69.8 sq m / 751 sq ft



Ground Floor



## Barlby Road, W10 - Leasehold

Local Authority **Royal Borough of Kensington & Chelsea**

- Three bedrooms
- Reception room
- Kitchen
- South-facing garden
- Long leasehold
- Council tax band: D
- EPC rating: D



Whilst every attempt has been made to ensure the accuracy of the floor plan, measurements are approximate and not to scale. No guarantee is given on the total square footage of the property quoted on the plan. Figures given are for guidance. Plan is for illustration purposes only, not to be used for valuations.