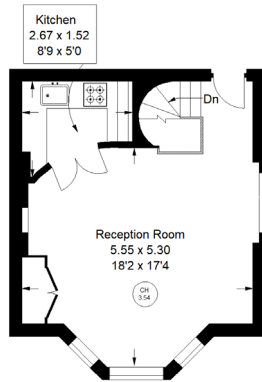


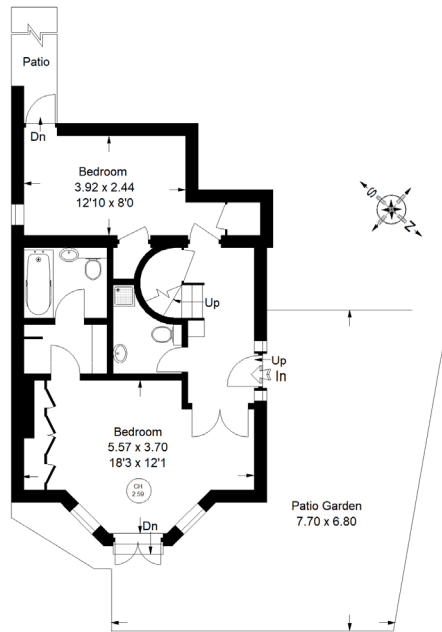


Oxford Gardens, W10



Raised Ground Floor

Approx. Gross Internal Area
= 83.4 m² / 898 ft²



Lower Ground Floor



Oxford Gardens, W10 - Leasehold

Local Authority **Royal Borough of Kensington & Chelsea**

- Two Bedrooms
- Two Bathrooms
- High Ceilings
- Own Entrance
- Private Garden
- EPC Rating: D
- Council Tax Band: F



Whilst every attempt has been made to ensure the accuracy of the floor plan, measurements are approximate and not to scale. No guarantee is given on the total square footage of the property quoted on the plan. Figures given are for guidance. Plan is for illustration purposes only, not to be used for valuations.