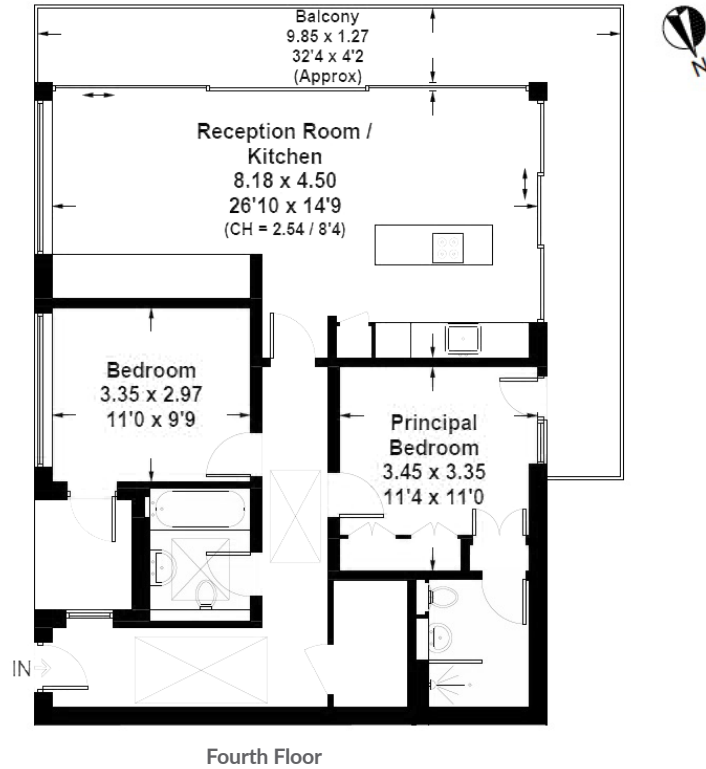


Brewster Gardens, W10

Approx. Gross Internal Area
= 81.9 m² / 881 ft²
Including Limited Use Area (1 m² / 11 ft²)



Brewster Gardens, W10 - Leasehold

Local Authority **Royal Borough of Kensington & Chelsea**

- Brand New Apartments
- Terraces
- Air Conditioning
- Exclusive Lift Access
- High Specification
- EPC Rating: C
- Council Tax Band: C



Whilst every attempt has been made to ensure the accuracy of the floor plan, measurements are approximate and not to scale. No guarantee is given on the total square footage of the property quoted on the plan. Figures given are for guidance. Plan is for illustration purposes only, not to be used for valuations.

LONDON OFFICES

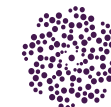
Kensington • Notting Hill • North Kensington 020 8960 0181

COUNTRY OFFICE

Cotswolds 01285 707222

mountgrangeheritage.co.uk

hello@mountgrangeheritage.co.uk



MOUNTGRANGE
HERITAGE