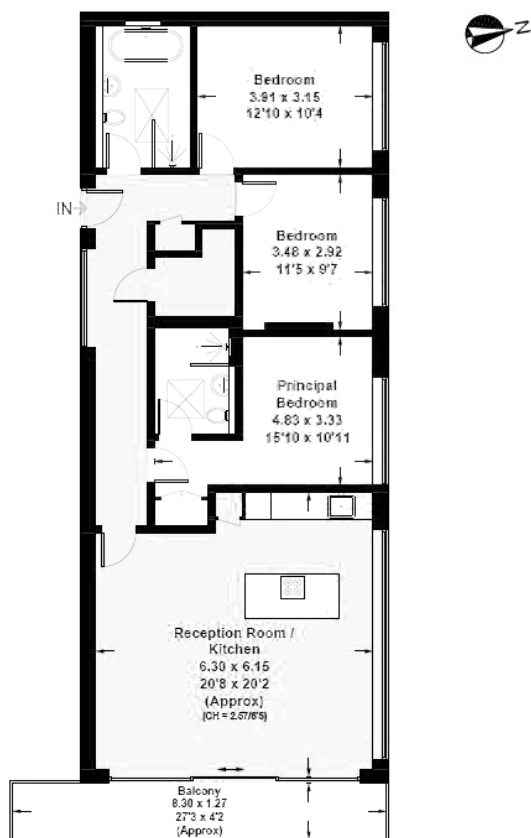




Brewster Gardens, W10

Approx. Gross Internal Area  
= 105.5 m<sup>2</sup> / 1136 ft<sup>2</sup>  
Including Limited Use Area (2.5 m<sup>2</sup> / 27 ft<sup>2</sup>)



Fourth Floor



## Brewster Gardens, W10 - Leasehold

Local Authority **Royal Borough of Kensington & Chelsea**

- Brand New Apartments
- Terraces
- Air Conditioning
- Exclusive Lift Access
- High Specification
- EPC Rating: C
- Council Tax Band: C



Whilst every attempt has been made to ensure the accuracy of the floor plan, measurements are approximate and not to scale. No guarantee is given on the total square footage of the property quoted on the plan. Figures given are for guidance. Plan is for illustration purposes only, not to be used for valuations.