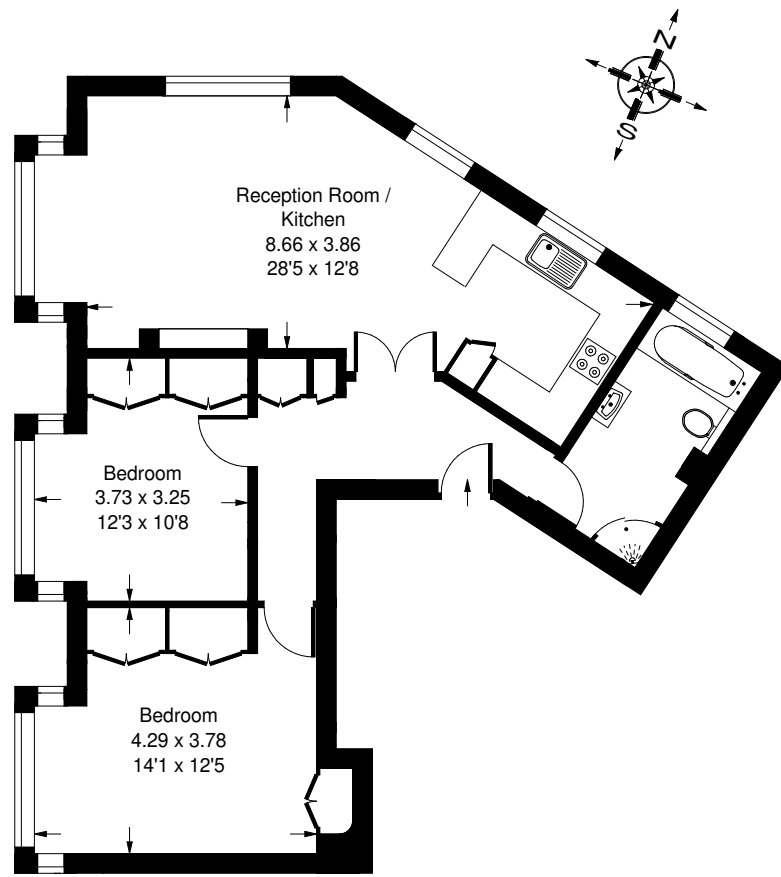




Highlever Road, St Quintin Avenue, W10

Approx. Gross Internal Area  
= 74.7 m<sup>2</sup> / 804 ft<sup>2</sup>



Second Floor



## Highlever Road, St Quintin Avenue, W10 Leasehold

Local Authority **Royal Borough of Kensington & Chelsea**

- Two Double Bedrooms
- Off Street Parking
- Newly Refurbished
- Lift
- EPC Rating: C
- Council Tax Band: D



Whilst every attempt has been made to ensure the accuracy of the floor plan, measurements are approximate and not to scale. No guarantee is given on the total square footage of the property quoted on the plan. Figures given are for guidance. Plan is for illustration purposes only, not to be used for valuations.

LONDON OFFICES

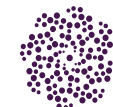
Kensington • Notting Hill • North Kensington 020 8960 0181

COUNTRY OFFICE

Cotswolds 01285 707222

[mountgrangeheritage.co.uk](http://mountgrangeheritage.co.uk)

[hello@mountgrangeheritage.co.uk](mailto:hello@mountgrangeheritage.co.uk)



**MOUNTGRANGE**  
HERITAGE