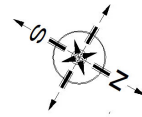
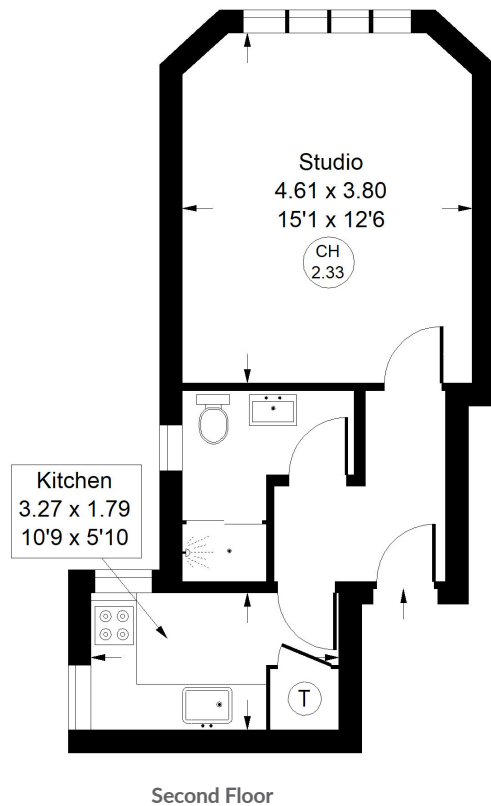




St Helen's Gardens, W10



Approx. Gross Internal Area  
= 32.3 m<sup>2</sup> / 348 ft<sup>2</sup>



## St Helen's Gardens, W10 Leasehold

Local Authority **Royal Borough of Kensington & Chelsea**

- Second Floor Flat
- Bright & Airy Studio
- Separate Kitchen
- Newly Refurbished
- Conveniently Located
- EPC Rating: B
- Council Tax Band: C



Whilst every attempt has been made to ensure the accuracy of the floor plan, measurements are approximate and not to scale. No guarantee is given on the total square footage of the property quoted on the plan. Figures given are for guidance. Plan is for illustration purposes only, not to be used for valuations.