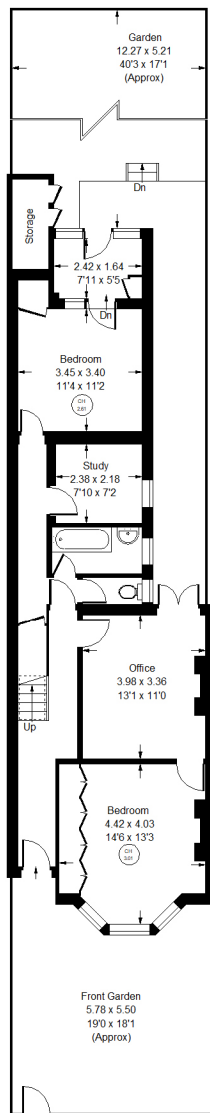


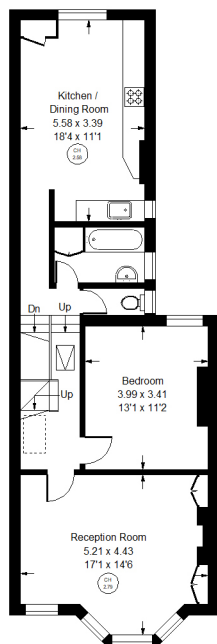


Barlby Road, W10

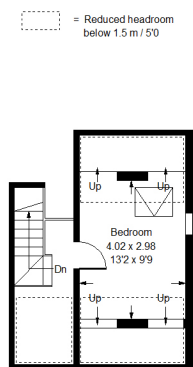


Ground Floor

Approx. Gross Internal Area
 = 174.6 m² / 1879 ft²
 Storage = 2.5 m² / 27 ft²
 Total = 177.1 m² / 1906 ft²



First Floor



Second Floor



Barlby Road, W10 Freehold

Local Authority **Royal Borough of Kensington & Chelsea**

- Four Bedrooms
- Period Family House
- Reception Room
- Large South-Facing Garden
- Office
- Study
- EPC Rating: C
- Council Tax Band: F



Whilst every attempt has been made to ensure the accuracy of the floor plan, measurements are approximate and not to scale. No guarantee is given on the total square footage of the property quoted on the plan. Figures given are for guidance. Plan is for illustration purposes only, not to be used for valuations.

LONDON OFFICES

Kensington • Notting Hill • North Kensington 020 8960 0181

COUNTRY OFFICE

Cotswolds 01285 707222

mountgrangeheritage.co.uk

hello@mountgrangeheritage.co.uk



MOUNTGRANGE
HERITAGE