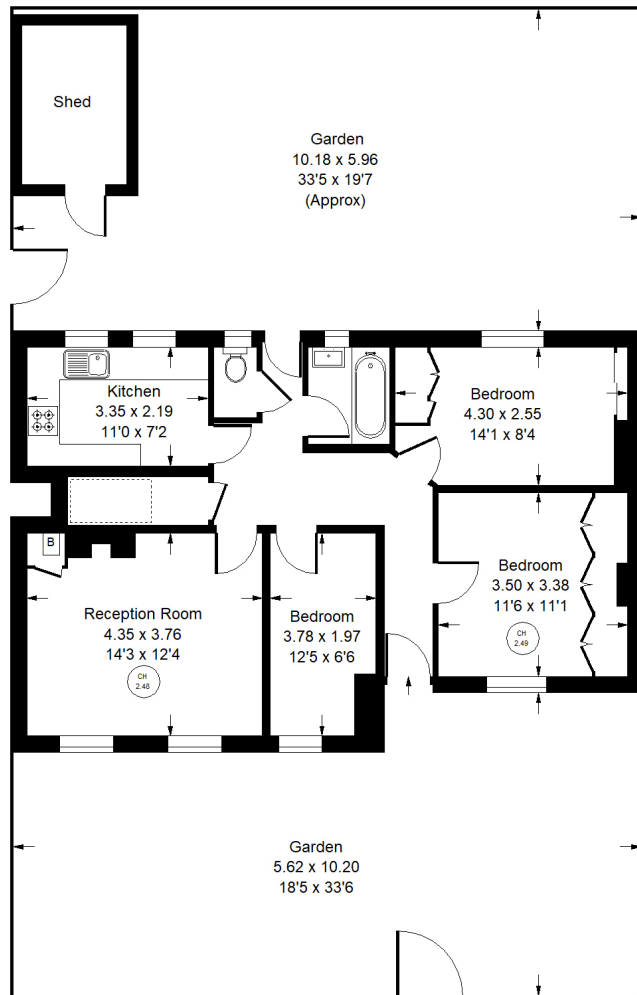


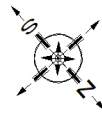


Hill Farm Road, W10



Ground Floor

Approx. Gross Internal Area
= 73.5 m² / 791 ft²



Hill Farm Road, W10 Leasehold

Local Authority **Royal Borough of Kensington & Chelsea**

- Three Bedrooms
- Private Entrance
- West-Facing Garden
- Quiet Street
- EPC Rating: D
- Council Tax Band: D
- Service Charge: £1,116 per annum
- Ground Rent: £10 per annum
- Remaining Lease: 91 years



Whilst every attempt has been made to ensure the accuracy of the floor plan, measurements are approximate and not to scale. No guarantee is given on the total square footage of the property quoted on the plan. Figures given are for guidance. Plan is for illustration purposes only, not to be used for valuations.