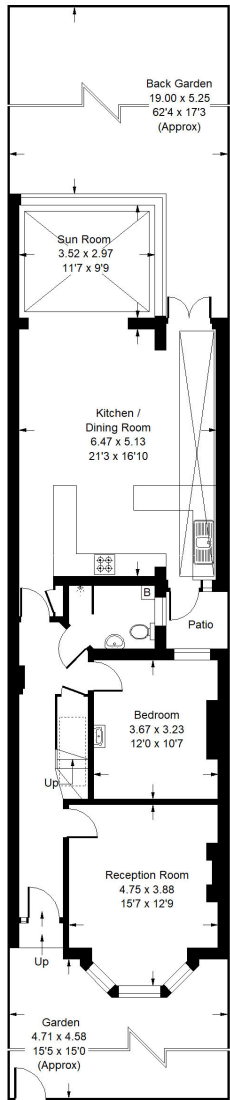
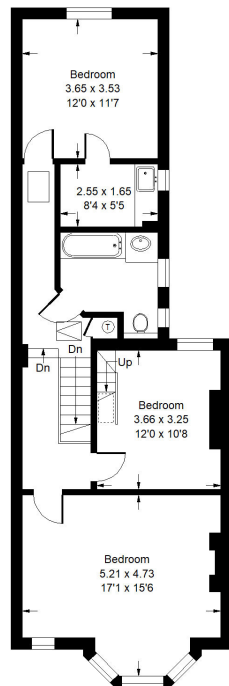




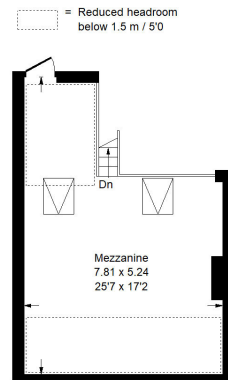
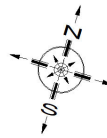
Kelfield Gardens, W10



Ground Floor



First Floor



Mezzanine

Approx. Gross Internal Area
= 197.6 m² / 2127 ft²
(Including Mezzanine)



Kelfield Gardens, W10 Freehold

Local Authority **Royal Borough of Kensington & Chelsea**

- Four Bedrooms
- Two Bathrooms
- Two Reception Rooms
- Large Private Garden
- Planning Permission In Place
- Council Tax Band: G
- EPC Rating: E



Whilst every attempt has been made to ensure the accuracy of the floor plan, measurements are approximate and not to scale. No guarantee is given on the total square footage of the property quoted on the plan. Figures given are for guidance. Plan is for illustration purposes only, not to be used for valuations.

LONDON OFFICES

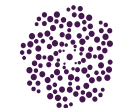
Kensington • Notting Hill • North Kensington 020 8960 0181

COUNTRY OFFICE

Cotswolds 01285 707222

mountgrangeheritage.co.uk

hello@mountgrangeheritage.co.uk



MOUNTGRANGE
HERITAGE