



Slade Road,

**Price £270,000**



**Reeds Rains**

• Since 1868 •

[www.reedsrains.co.uk](http://www.reedsrains.co.uk)



a, Slade Road, Portishead, Bristol  
**Price £270,000**

Unrivalled in terms of quality, Adlington House has excellent communal facilities including 24 hour on site staffing, restaurant, gardens, residents lounge and much more. This particular apartment has a balcony, good size living room, fitted kitchen with numerous built in appliances, wet room and two bedrooms, with fitted wardrobes in the master bedroom. EPC Grade C.

#### ENTRANCE HALL

Entrance door with recessed spot lights, video entryphone; cupboard with heating system and controls, consumer unit; cupboard with lighting, shelving, hanging rails, space for washing machine.

#### LIVING ROOM

5.66m x 3.84m (max) (18'7" x 12'7" (max))  
Electric feature fireplace, radiator, Upvc double glazed double doors to:

#### BALCONY

Enclosed by glass panel.

#### KITCHEN

3.10m x 2.39m (10'2" x 7'10")  
Recessed spot lights, Upvc double glazed window overlooking rear gardens, range of fitted wall and base units with roll edge work surfaces with stainless steel one and a half bowl single drainer sink unit with mono block tap, integral dishwasher, fridge/freezer, stainless steel oven

and microwave, induction hob with extractor fan over and stainless steel splash back.

#### BEDROOM 1

4.55m x 2.95m (14'11" x 9'8")  
Upvc double glazed window overlooking rear, built in floor to ceiling mirror wardrobes with shelf and hanging rail, electric panel radiator.

#### BEDROOM 2

4.55m x 2.92m (max) (14'11" x 9'7" (max))  
Upvc double glazed window overlooking rear, electric panel radiator.

#### WET-ROOM

2.54m x 1.70m (8'4" x 5'7")  
Recessed spotlights, tiled walls, heated towel rail/radiator, walk in shower, WC with hidden cistern, pedestal wash basin with mirrored cabinet over.

#### COMMUNAL GARDEN

There are manicured communal gardens for residents to enjoy.

#### COMMUNAL PARKING

There is residents permit parking available.

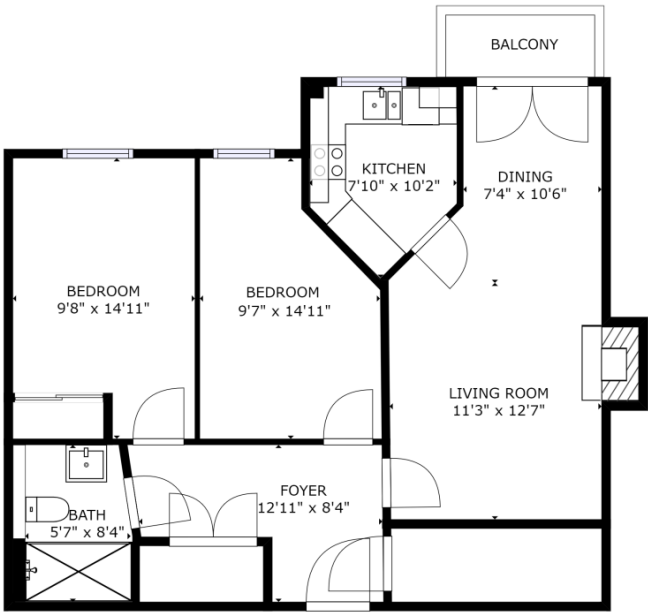
#### COMMUNAL FACILITIES

Adlington house has a manager on site 24 hour a day and there are many on-site communal facilities including a residents lounge, restaurant, activities

room, spa and hair salon. Various care packages are available.



For full EPC please contact the branch



FLOOR 1

GROSS INTERNAL AREA  
FLOOR 1: 807 sq ft  
TOTAL: 807 sq ft  
SIZES AND DIMENSIONS ARE APPROXIMATE, ACTUAL MAY VARY



**Agent's Notes** Please note that we have not tested any apparatus, equipment, fixtures, fittings or services, and so cannot verify they are in working order or fit for their purpose. Furthermore solicitors should confirm moveable items described in the sales particulars are, in fact, included in the sale since circumstances do change during marketing or negotiations. A final inspection prior to exchange of contracts is also recommended. Although we try to ensure accuracy, measurements used in this brochure may be approximate. Therefore if intending purchasers need accurate measurements to order carpeting or to ensure existing furniture will fit, they should take such measurements themselves.



