



## 31 Bridgeman Road, Blacon, Chester, Cheshire, CH1 5LZ

Offers In The Region Of £149,950

- No onward chain
- Modern kitchen
- Two double bedrooms
- Cul -de- sac location
- Large rear garden
- EPC TBC

## 31 Bridgeman Road, Chester CH1 5LZ

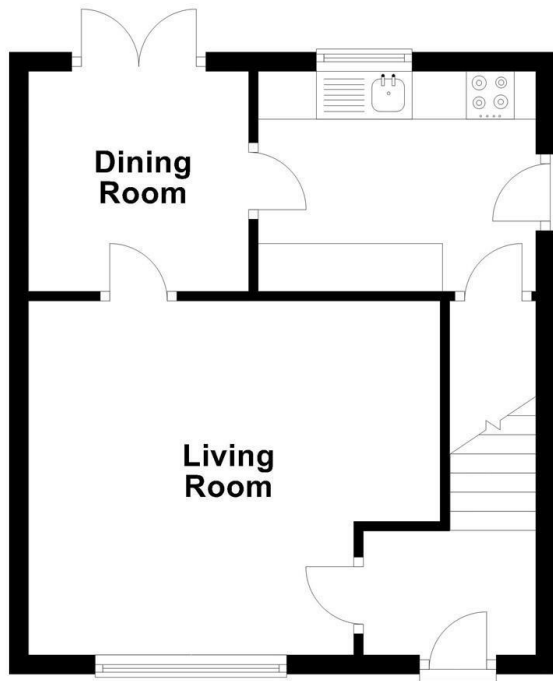
An exceptional opportunity to purchase this delightful, spacious two double bed roomed property. For sale with no onward chain, a wonderfully large rear garden, neutral tones features throughout . This property would be an ideal first time buyer property or as a buy to let with achievable rent of £750pcm. To arrange a viewing please call 01244 380 380 or email [enquiries@pdaestateagents.com](mailto:enquiries@pdaestateagents.com).



Council Tax Band:



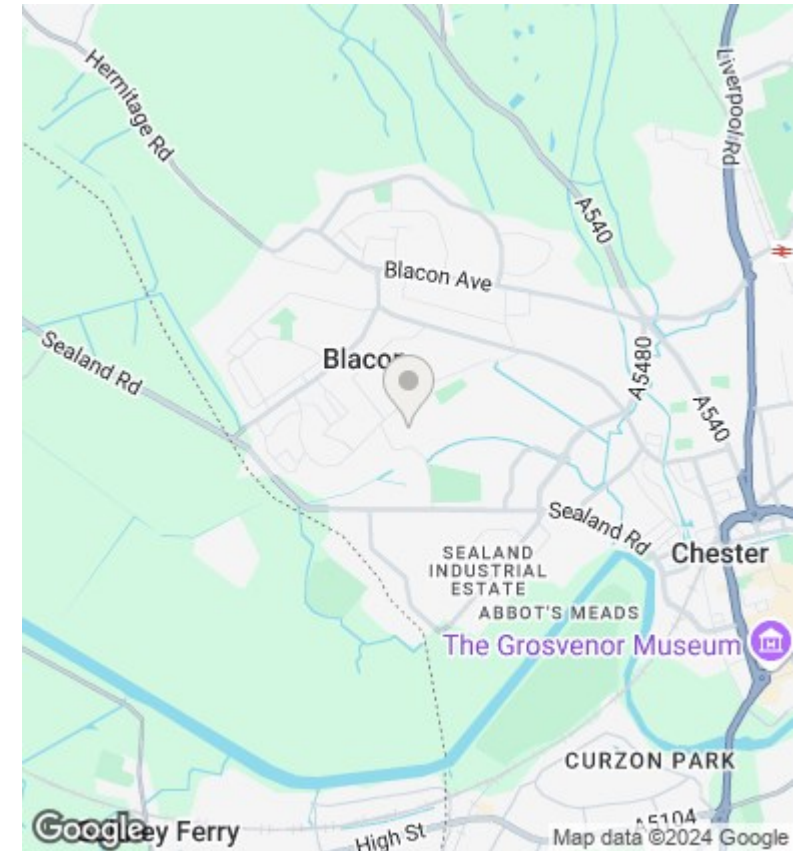




### Ground Floor

Approx. 32.3 sq. metres (348.0 sq. feet)

Total area: approx. 64.7 sq. metres (696.4 sq. feet)



### Directions

### Viewings

Viewings by arrangement only. Call 01244 380 380 to make an appointment.

### Council Tax Band

Energy Efficiency Rating		
	Current	Potential
<i>Very energy efficient - lower running costs</i>		
(92 plus) <b>A</b>		
(81-91) <b>B</b>		
(69-80) <b>C</b>		
(55-68) <b>D</b>		
(39-54) <b>E</b>		
(21-38) <b>F</b>		
(1-20) <b>G</b>		
<i>Not energy efficient - higher running costs</i>		
<b>England &amp; Wales</b>	EU Directive 2002/91/EC	