

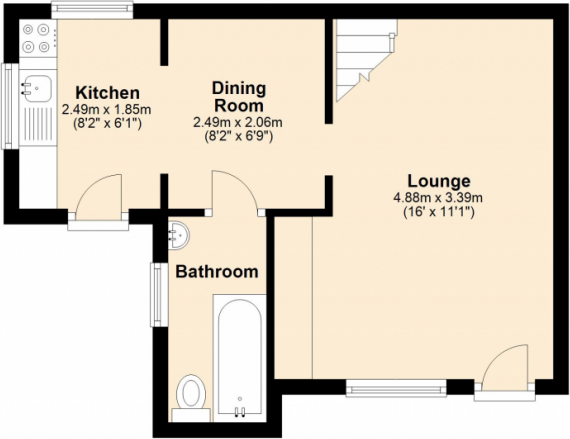


Property Description

Offered with no upward chain. Situated in the idyllic village of Broseley Wood, this charming 2-bedroom end-terraced cottage offers an exceptional opportunity for those seeking a blend of rural tranquility and modern living. This home is tucked away on Legges Hill and has pleasant countryside views. Subject to planning consent, there is also the potential for future development with lapsed planning permission previously granted for a rear extension, ref 11/04978/FUL.

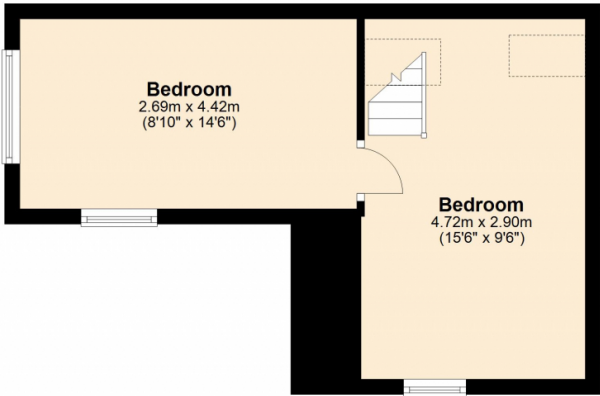
Ground Floor

Approx. 30.0 sq. metres (323.1 sq. feet)



First Floor

Approx. 27.5 sq. metres (296.3 sq. feet)



Total area: approx. 57.5 sq. metres (619.3 sq. feet)



Energy performance certificate (EPC)

7 Legges Hill
Broseley Wood
BROSELEY
TF12 5RD

Energy rating

D

Valid until:

1 April 2035

Certificate number:

0798-3048-6204-7035-6204

Property type

End-terrace house

Total floor area

57 square metres

Rules on letting this property

Properties can be let if they have an energy rating from A to E.

You can read [guidance for landlords on the regulations and exemptions \(https://www.gov.uk/guidance/domestic-private-rented-property-minimum-energy-efficiency-standard-landlord-guidance\)](https://www.gov.uk/guidance/domestic-private-rented-property-minimum-energy-efficiency-standard-landlord-guidance).

Energy rating and score

This property's energy rating is D. It has the potential to be B.

[See how to improve this property's energy efficiency.](#)

The graph shows this property's current and potential energy rating.

Properties get a rating from A (best) to G (worst) and a score. The better the rating and score, the lower your energy bills are likely to be.

For properties in England and Wales:

the average energy rating is D
the average energy score is 60

Score	Energy rating	Current	Potential
92+	A		
81-91	B		82 B
69-80	C		
55-68	D	59 D	
39-54	E		
21-38	F		
1-20	G		

Breakdown of property's energy performance

Features in this property

Features get a rating from very good to very poor, based on how energy efficient they are. Ratings are not based on how well features work or their condition.

Assumed ratings are based on the property's age and type. They are used for features the assessor could not inspect.

Feature	Description	Rating
Wall	Solid brick, as built, no insulation (assumed)	Poor
Roof	Pitched, no insulation (assumed)	Very poor
Window	Fully double glazed	Average
Main heating	Boiler and radiators, mains gas	Good
Main heating control	Programmer, room thermostat and TRVs	Good
Hot water	From main system	Good
Lighting	Low energy lighting in all fixed outlets	Very good
Floor	Solid, no insulation (assumed)	N/A
Secondary heating	Room heaters, wood logs	N/A

Low and zero carbon energy sources

Low and zero carbon energy sources release very little or no CO₂. Installing these sources may help reduce energy bills as well as cutting carbon emissions. The following low or zero carbon energy sources are installed in this property:

- Biomass secondary heating

Primary energy use

The primary energy use for this property per year is 351 kilowatt hours per square metre (kWh/m²).

How this affects your energy bills

An average household would need to spend **£1,177 per year on heating, hot water and lighting** in this property. These costs usually make up the majority of your energy bills.

You could **save £306 per year** if you complete the suggested steps for improving this property's energy rating.

This is **based on average costs in 2025** when this EPC was created. People living at the property may use different amounts of energy for heating, hot water and lighting.

Heating this property

Estimated energy needed in this property is:

- 11,881 kWh per year for heating
 - 1,609 kWh per year for hot water
-

Impact on the environment

This property's environmental impact rating is D. It has the potential to be B.

Properties get a rating from A (best) to G (worst) on how much carbon dioxide (CO₂) they produce each year.

Carbon emissions

An average household produces 6 tonnes of CO₂

This property produces 3.2 tonnes of CO₂

This property's potential production 1.3 tonnes of CO₂

You could improve this property's CO₂ emissions by making the suggested changes. This will help to protect the environment.

These ratings are based on assumptions about average occupancy and energy use. People living at the property may use different amounts of energy.

Steps you could take to save energy

Step	Typical installation cost	Typical yearly saving
1. Internal or external wall insulation	£4,000 - £14,000	£217
2. Floor insulation (solid floor)	£4,000 - £6,000	£52
3. Solar water heating	£4,000 - £6,000	£38
4. Solar photovoltaic panels	£3,500 - £5,500	£430

Advice on making energy saving improvements

[Get detailed recommendations and cost estimates \(www.gov.uk/improve-energy-efficiency\)](https://www.gov.uk/improve-energy-efficiency)

Help paying for energy saving improvements

You may be eligible for help with the cost of improvements:

- Insulation: [Great British Insulation Scheme \(www.gov.uk/apply-great-british-insulation-scheme\)](https://www.gov.uk/apply-great-british-insulation-scheme)
- Heat pumps and biomass boilers: [Boiler Upgrade Scheme \(www.gov.uk/apply-boiler-upgrade-scheme\)](https://www.gov.uk/apply-boiler-upgrade-scheme)
- Help from your energy supplier: [Energy Company Obligation \(www.gov.uk/energy-company-obligation\)](https://www.gov.uk/energy-company-obligation)

Who to contact about this certificate

Contacting the assessor

If you're unhappy about your property's energy assessment or certificate, you can complain to the assessor who created it.

Assessor's name	Glyn Howells
Telephone	07817773526
Email	glyn@spp-property.co.uk

Contacting the accreditation scheme

If you're still unhappy after contacting the assessor, you should contact the assessor's accreditation scheme.

Accreditation scheme	Elmhurst Energy Systems Ltd
Assessor's ID	EES/029271
Telephone	01455 883 250
Email	enquiries@elmhurstenergy.co.uk

About this assessment

Assessor's declaration	No related party
Date of assessment	1 April 2025
Date of certificate	2 April 2025
Type of assessment	RdSAP