

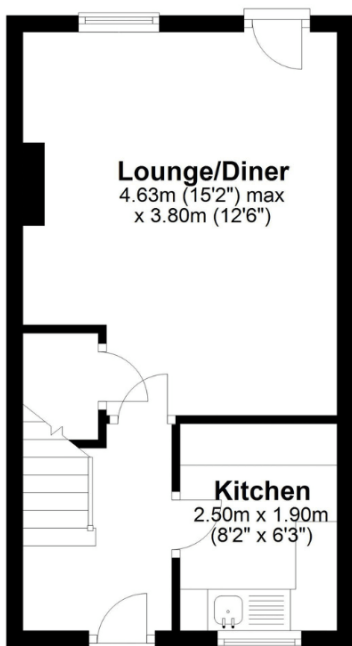


Property Description

Modern mid terraced house ideally positioned within a small cul de sac, includes new upvc double glazing and brand new bathroom suite, parking space and terraced garden to rear, convenient for the local primary school and doctors surgery, close proximity to countryside walks, local village store nearby, views of the Wrekin

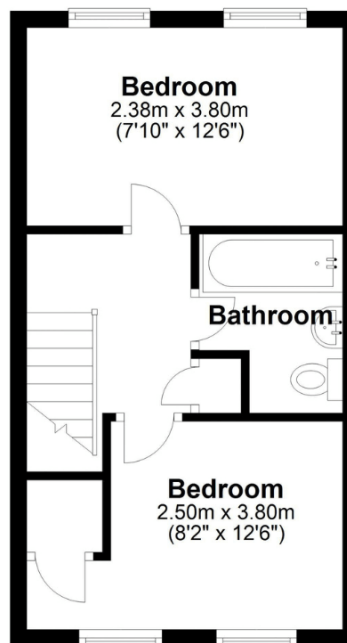
Ground Floor

Approx. 27.5 sq. metres (295.7 sq. feet)



First Floor

Approx. 27.5 sq. metres (295.7 sq. feet)



Total area: approx. 54.9 sq. metres (591.5 sq. feet)

Energy Efficiency Rating

	Current	Potential
<i>Very energy efficient - lower running costs</i>		
(92+) A		90
(81-91) B		
(69-80) C		
(55-68) D	58	
(39-54) E		
(21-38) F		
(1-20) G		
<i>Not energy efficient - higher running costs</i>		
England, Scotland & Wales		EU Directive 2002/91/EC



Address: Cherry Arbor, Cressage, Shrewsbury