

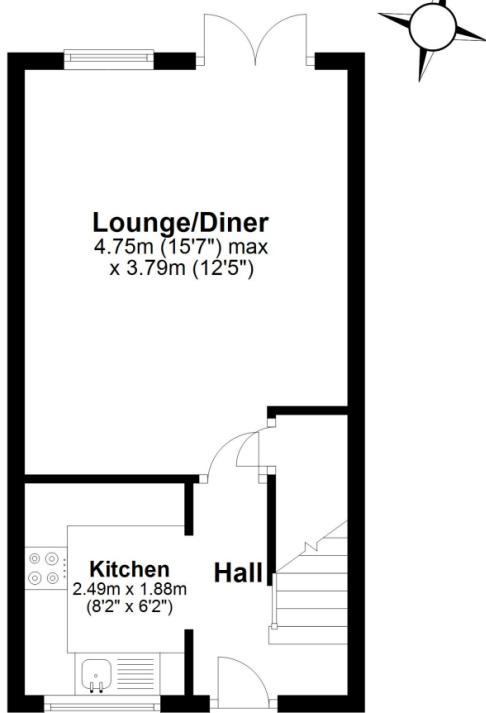


### Property Description

Welcome to 22 Cherry Arbor, a beautifully presented end terrace located in the charming village of Cressage, near Shrewsbury. This impressive property offers, oil fired central heating, double glazing, kitchen, lounge, two good sized bedrooms, family bathroom, parking, pretty landscaped garden to the rear with views to the Wrekin. Viewing is highly recommended.

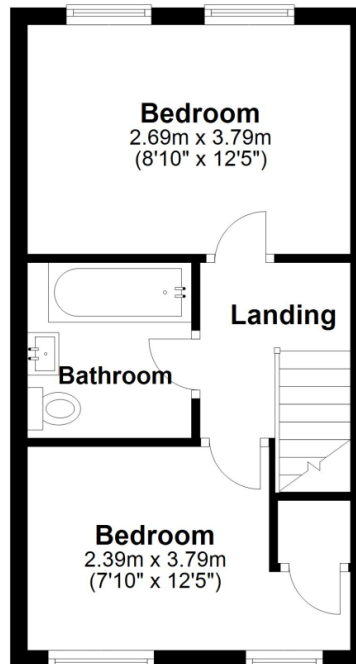
### Ground Floor

Approx. 27.9 sq. metres (299.9 sq. feet)



### First Floor


Approx. 27.9 sq. metres (299.9 sq. feet)



Total area: approx. 55.7 sq. metres (599.7 sq. feet)

For illustrative purposes only. Not to scale  
 Prepared by Shropshire Property Professionals  
 Tel: 07817 773 526 - www.spp-property.co.uk  
 Plan produced using PlanUp.

### Energy Efficiency Rating

	Current	Potential
<i>Very energy efficient - lower running costs</i>		
(92+) <b>A</b>		
(81-91) <b>B</b>		<b>87</b>
(69-80) <b>C</b>	<b>68</b>	
(55-68) <b>D</b>		
(39-54) <b>E</b>		
(21-38) <b>F</b>		
(1-20) <b>G</b>		
<i>Not energy efficient - higher running costs</i>		
<b>England, Scotland &amp; Wales</b>		EU Directive 2002/91/EC 



Address: Cherry Arbor, Shrewsbury