

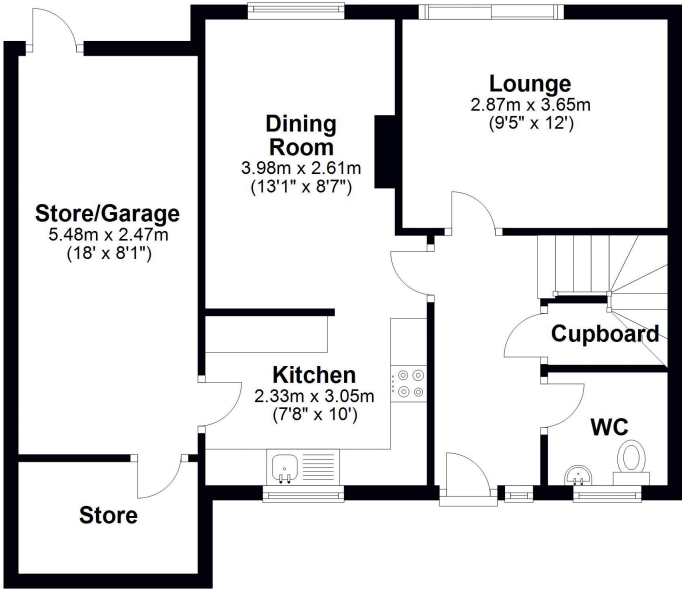


Property Description

Modern semi-detached house lying in an established residential location within easy reach of the town centre, gas fired central heating, upvc double glazing, recently re-decorated, garage (part converted), gardens to front and rear, parking for two vehicles, no vendor chain

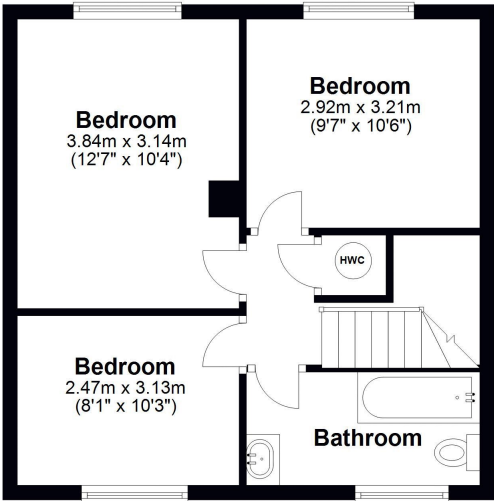
Ground Floor

Approx. 58.9 sq. metres (634.3 sq. feet)

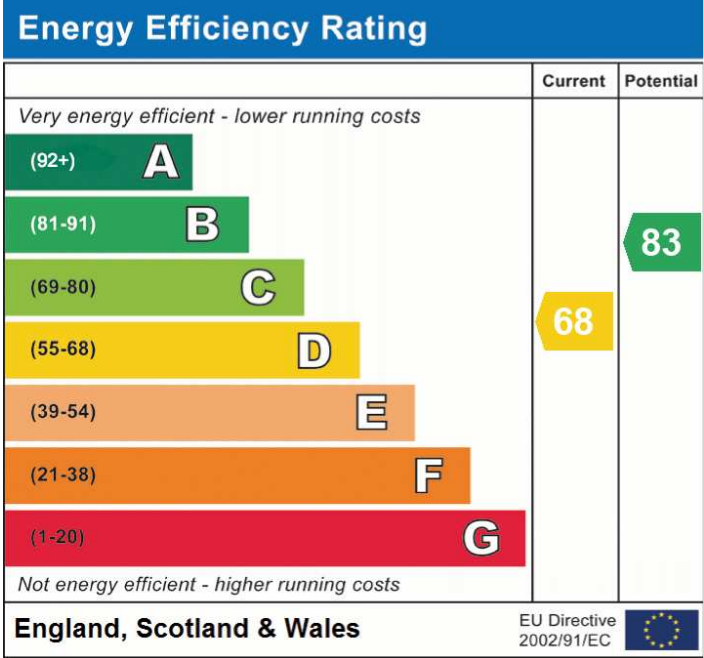


First Floor

Approx. 41.5 sq. metres (446.3 sq. feet)



Total area: approx. 100.4 sq. metres (1080.6 sq. feet)



Address: High Causeway, Much Wenlock