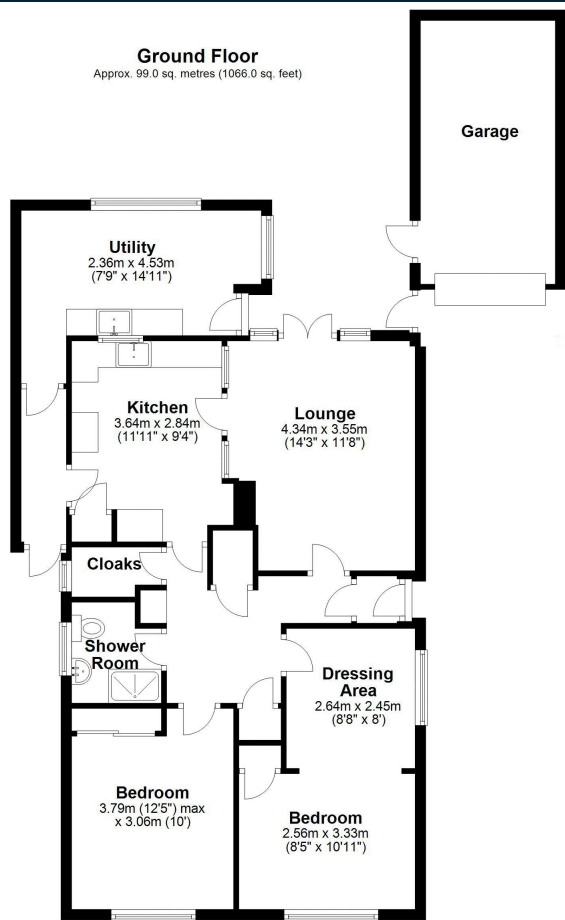




### Property Description

Attractive modern detached bungalow occupying an excellent elevated position on this highly sought after residential development, gas fired central heating, upvc double glazing, driveway parking, single garage, stepped gardens with lovely views from the top, stone gravelled garden to the front, no vendor chain





Total area: approx. 99.0 sq. metres (1066.0 sq. feet)

### Energy Efficiency Rating

	Current	Potential
Very energy efficient - lower running costs		
(92+) <b>A</b>		
(81-91) <b>B</b>		85
(69-80) <b>C</b>	69	
(55-68) <b>D</b>		
(39-54) <b>E</b>		
(21-38) <b>F</b>		
(1-20) <b>G</b>		
Not energy efficient - higher running costs		
<b>England, Scotland &amp; Wales</b>	EU Directive 2002/91/EC	



Address: Oakfield Park, Much Wenlock