

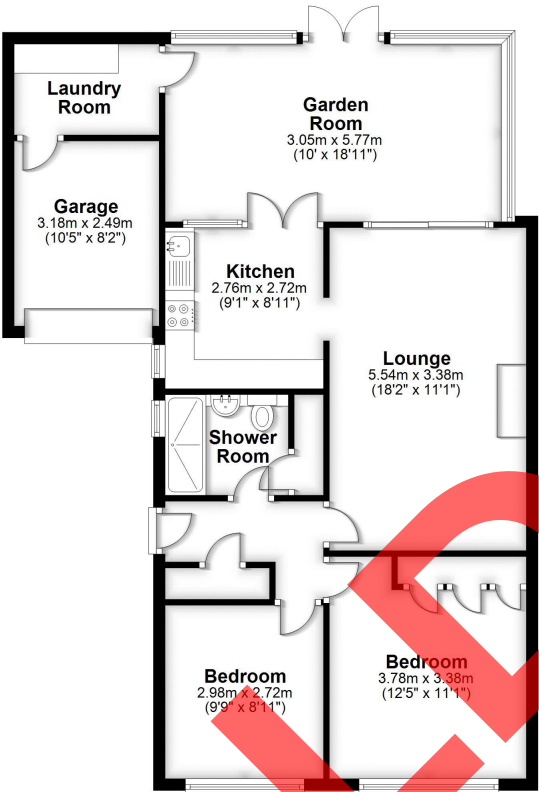


Property Description

Beautifully presented and spacious modern detached bungalow within this highly sought after residential location, The property offers, oil fired central heating, upvc double glazing, lounge, conservatory, two good sized bedrooms, attractive garden to the rear, ample parking and single garage.

Ground Floor

Approx. 90.2 sq. metres (970.5 sq. feet)



Total area: approx. 90.2 sq. metres (970.5 sq. feet)

For illustrative purposes only Not to scale
Prepared by Shropshire Property Professionals
Tel: 07817 773 526 - www.spp-property.co.uk
Plan produced using PlanUp.

Energy Efficiency Rating

	Current	Potential
Very energy efficient - lower running costs		
(92+) A		
(81-91) B		83
(69-80) C		
(55-68) D	60	
(39-54) E		
(21-38) F		
(1-20) G		
Not energy efficient - higher running costs		
England, Scotland & Wales		
EU Directive 2002/91/EC		



Address: Severn Way, Shrewsbury