

18 Cricket Meadow, Bridgnorth Shropshire, WV16 4LB



Attractive detached family house in this highly sought after residential cul-de-sac within close proximity to the town centre, gas fired central heating, double glazed, spacious and adaptable accommodation, long driveway, single garage, delightful lawned gardens.

Price Guide: £350,000

58 High Street, Much Wenlock, Shropshire TF13 6AE

sales@stentonsproperty.co.uk

T: 01952 728200 01952 883300

www.stentonsestateagents.com

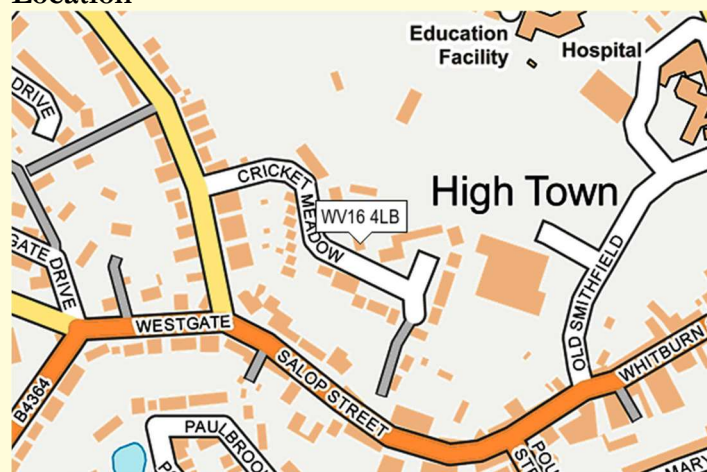
18 Cricket Meadow, Bridgnorth, Shropshire

Bridgnorth is named after a bridge over the River Severn that was built further north, and the town has a wealth of history to its name. As early as 895 it is recorded that the Danes created a camp nearby, although the town itself was formed in 1101 with the construction of a castle and church for the purpose of defending against an attack from Wales. The ruins of the castle still stand today, although due to damage caused during the Civil War, the castle is inclined at an angle of 15 degrees.

Today, Bridgnorth is a thriving market town with an excellent selection of pubs, cafes and restaurants. There are many shops and supermarkets which cater for most day to day needs, and the town has excellent schooling from nursery through to secondary, along with very good leisure and swimming facilities.

Bridgnorth is home to Castle Hill Railway, and the Severn Valley Railway. There are transport links to Telford, Kidderminster and the motorway and rail networks beyond.

Location



Local Authority – Shropshire Council

Council tax band E

All mains services are connected.

Viewings are strictly by appointment via the Agents

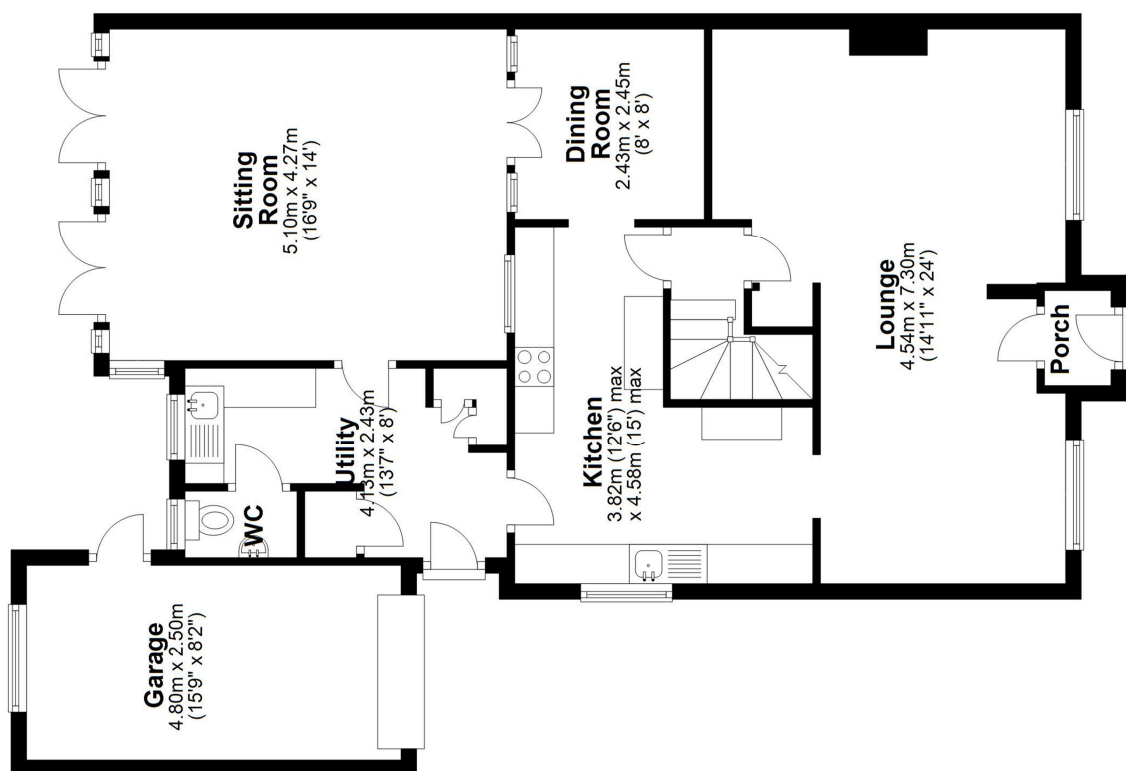


Energy performance certificate (EPC) - Find an energy certificate - GOV.UK			
Score	Energy rating	Current	Potential
92+	A		
81-91	B		83 B
69-80	C		
55-68	D	68 D	
39-54	E		
21-38	F		
1-20	G		



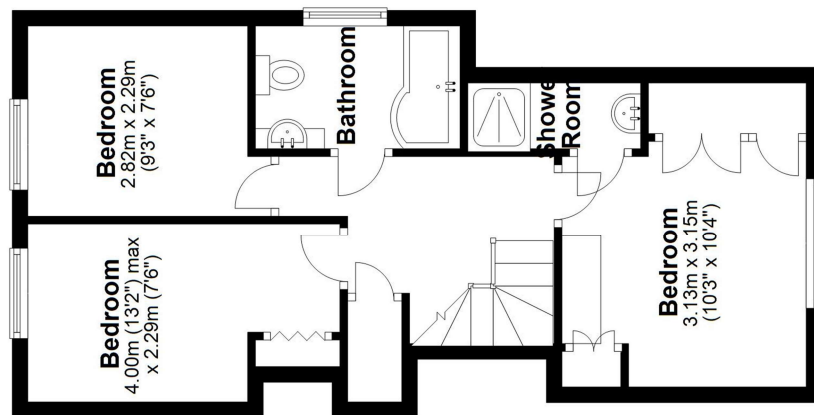
Ground Floor

Approx. 96.3 sq. metres (1036.7 sq. feet)



First Floor

Approx. 42.2 sq. metres (454.5 sq. feet)



Total area: approx. 138.5 sq. metres (1491.1 sq. feet)

Important note: We take great care in preparing our property brochures and the details in these particulars are believed to be correct, but their accuracy is not guaranteed nor do they form part of any contract. For clarification we wish to advise prospective purchasers that these sales particulars are intended as a general guide and none of the statements contained in these details should be relied upon as statements or representations of fact. We have not carried out a survey nor tested the services, appliances, alarms or specific fittings. Room sizes should not be relied upon for carpets and furnishings. You are advised to undertake your own local enquiries and searches and to take advice from your legal representative.