



Robinsons Close

West Ealing W13

£1,299,999



Robinsons Close West Ealing W13



Description

Spacious 4-bedroom detached family home with a bright open-plan layout, south-facing garden, garage, off street parking & excellent school catchment. Chain-free & just 20 minutes to Central London via the Elizabeth Line.

Spacious 4-bedroom detached family home

Charming conservatory currently used as an office space

Master bedroom with en-suite shower room

Versatile garage with potential for conversion into a 5th bedroom/reception room

Within catchment of top-rated schools - Notting Hill & Ealing and St. Benedict's School

Expansive kitchen with breakfast area and ample storage

Bright open-plan reception and dining area

South-facing, well-manicured garden with a seating/barbecue area

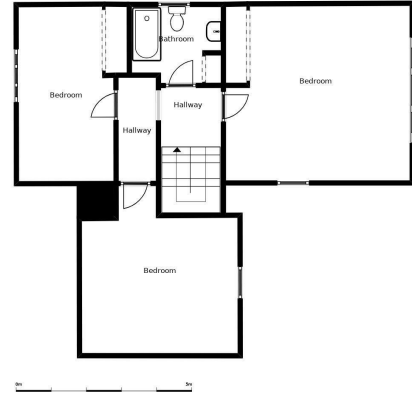
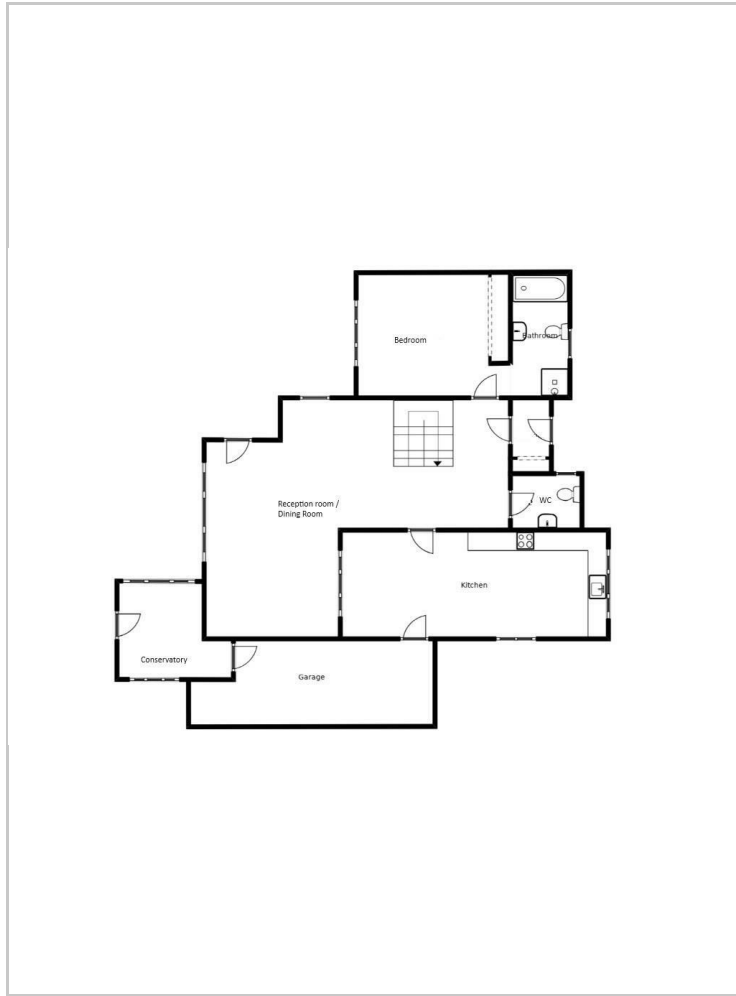
Off-street parking available

Conveniently close to West Ealing Station with Elizabeth Line access, 20 minutes to Central London

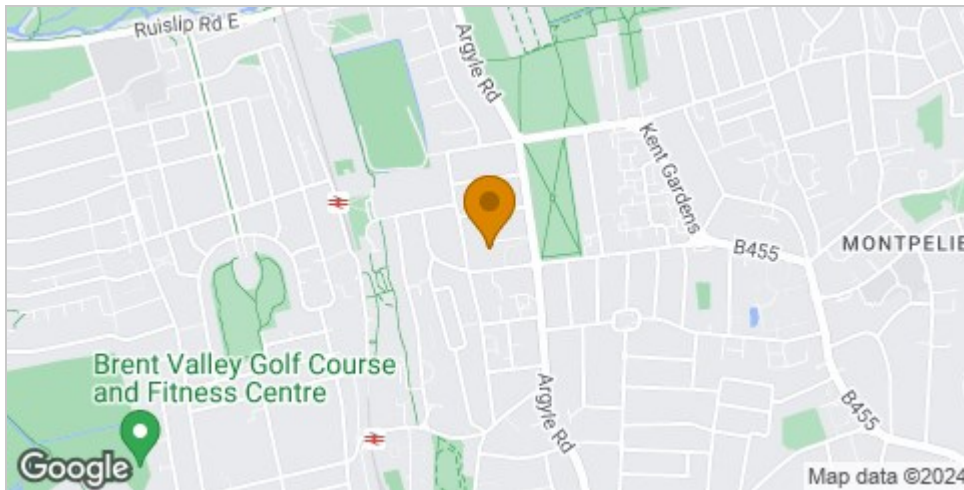




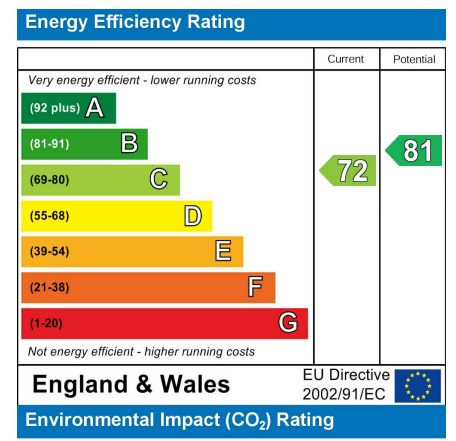
Floor Plan



Area Map



Energy Efficiency Graph



Viewing

Please contact our Castle Hill Properties - London, Berks & Bucks Office on 020 8998 1118 if you wish to arrange a viewing appointment for this property or require further information.

These particulars, whilst believed to be accurate are set out as a general outline only for guidance and do not constitute any part of an offer or contract. Intending purchasers should not rely on them as statements of representation of fact, but must satisfy themselves by inspection or otherwise as to their accuracy. No person in this firm's employment has the authority to make or give any representation or warranty in respect of the property.