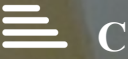




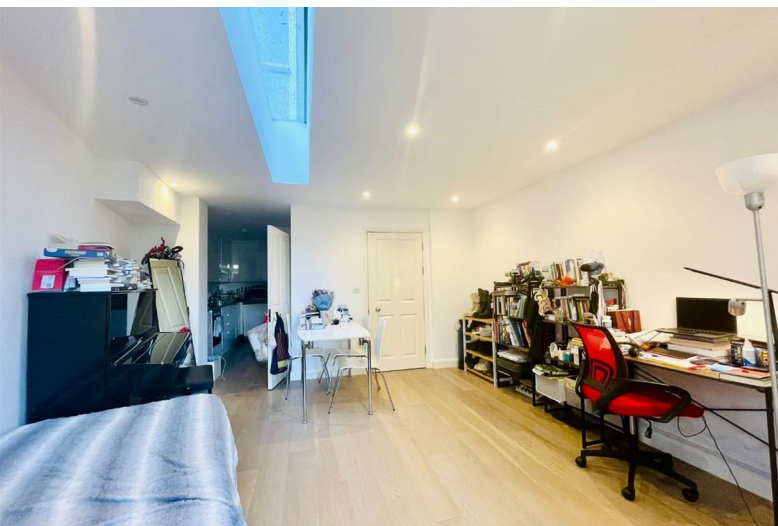
Grange Park

Ealing W5

£2,050 Per Month



Grange Park Ealing W5



Description

Don't miss out on this prime opportunity! A fully furnished 2-bedroom, 1-bathroom ground floor flat awaits. Enjoy the luxury of a spacious private garden. Perfectly situated within a 10-minute walk to both Ealing Broadway and Ealing Common stations, convenience meets comfort in this desirable flat.

Spacious 2 double bedrooms

Spacious Private garden

Furnished

Ground floor flat

Viewings highly recommended

Modern decor

Wood flooring

Modern bathroom

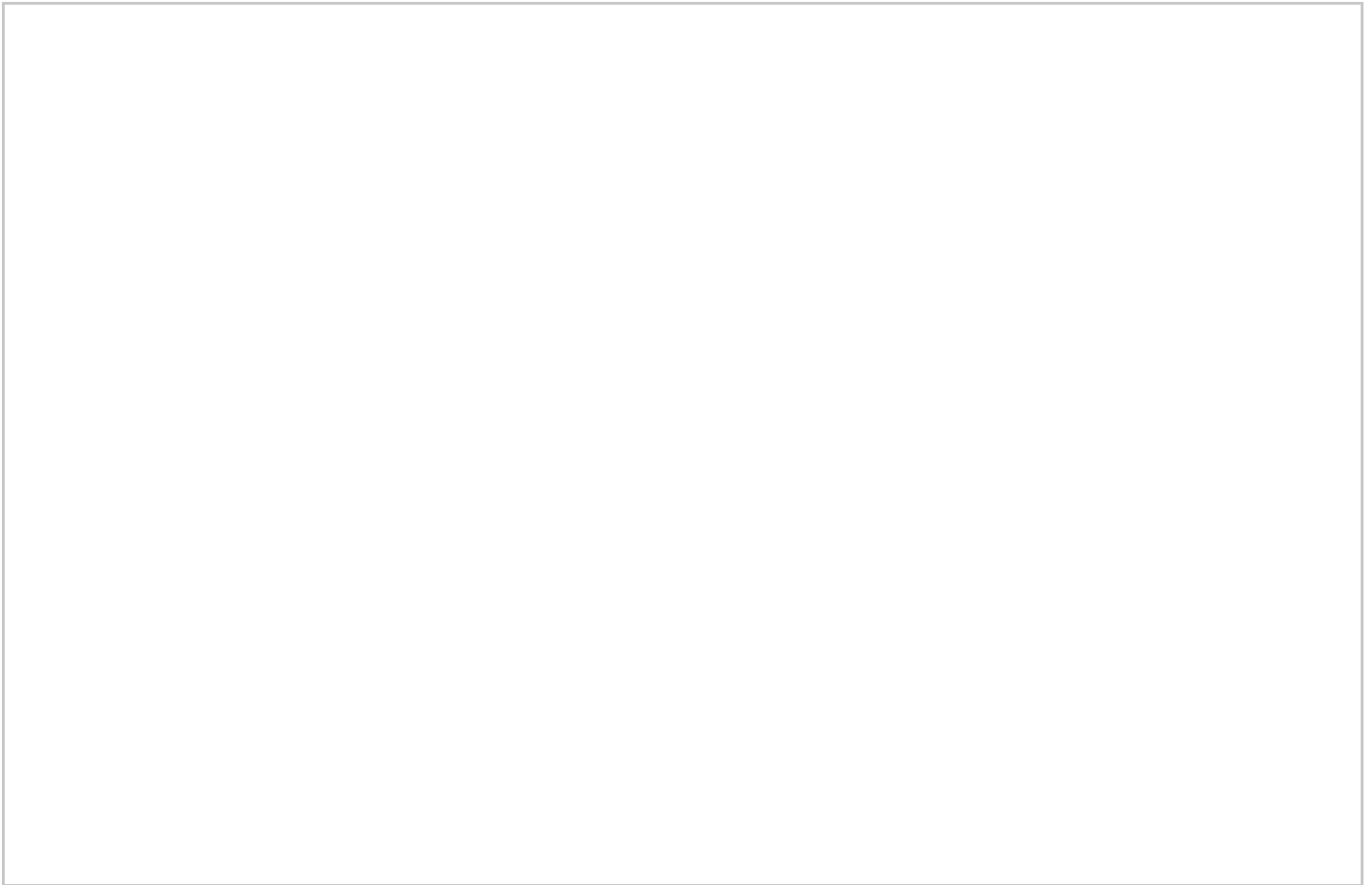
Walking distance to Ealing Common & Ealing Broadway stations

Council tax band D





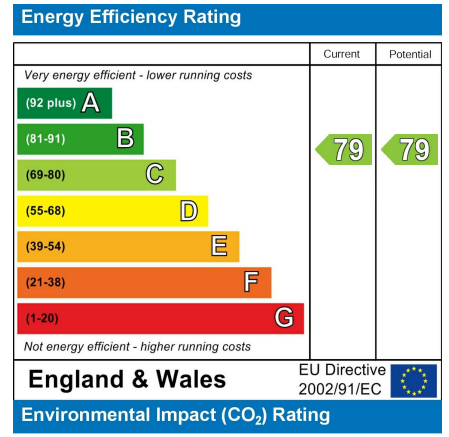
Floor Plan



Area Map



Energy Efficiency Graph



Viewing

Please contact our Castle Hill Properties - London, Berks & Bucks Office on 020 8998 1118 if you wish to arrange a viewing appointment for this property or require further information.

These particulars, whilst believed to be accurate are set out as a general outline only for guidance and do not constitute any part of an offer or contract. Intending purchasers should not rely on them as statements of representation of fact, but must satisfy themselves by inspection or otherwise as to their accuracy. No person in this firm's employment has the authority to make or give any representation or warranty in respect of the property.