

Boileau Road

Ealing W5

£1,425,000



Boileau Road Ealing W5



Description

Elegant 4/5 bed Edwardian house in Ealing with spacious rooms, modern amenities, and private garden. Conveniently close to North Ealing station, excellent schools, off-street parking.

Spacious 4/5 bed Edwardian house in Ealing

Large kitchen diner, two reception rooms & a sunlit conservatory

Meticulous detailing and period features throughout

Minutes away from North Ealing station for easy commuting

Off street parking

Classic charm meets modern convenience

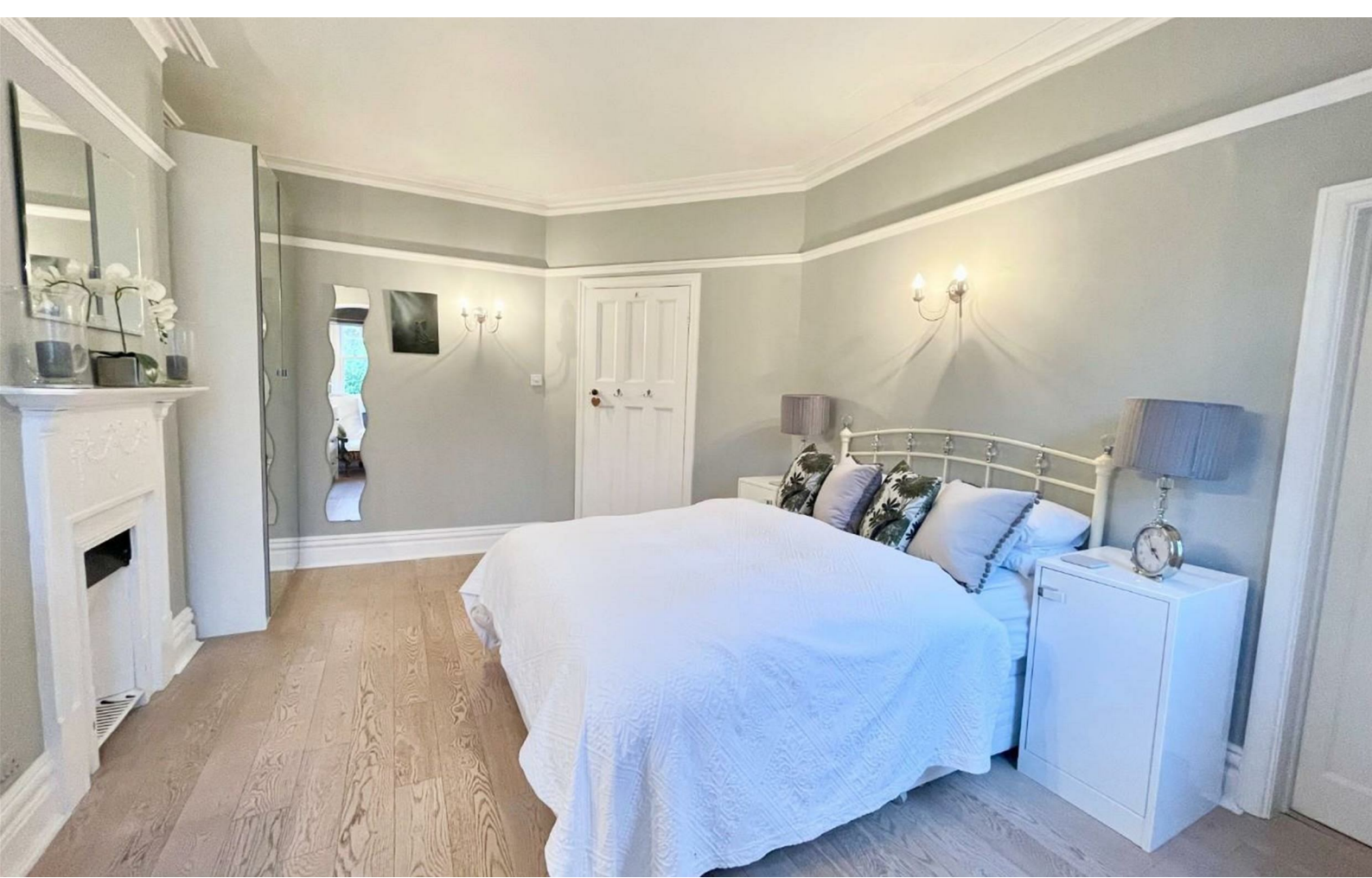
Versatile fifth bedroom currently used as an office

Rear garden

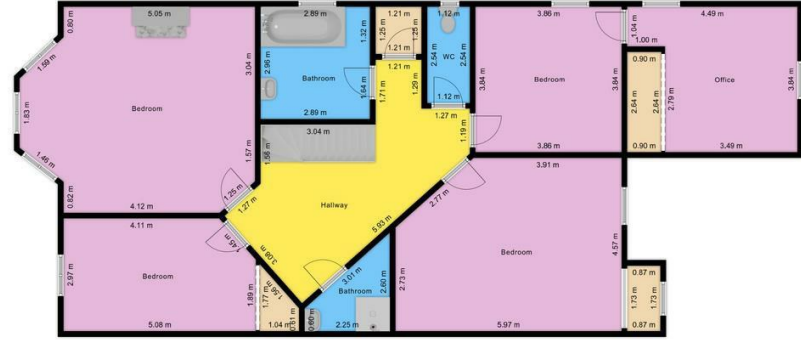
Excellent schools in the vicinity

Potential for a loft conversion stpp

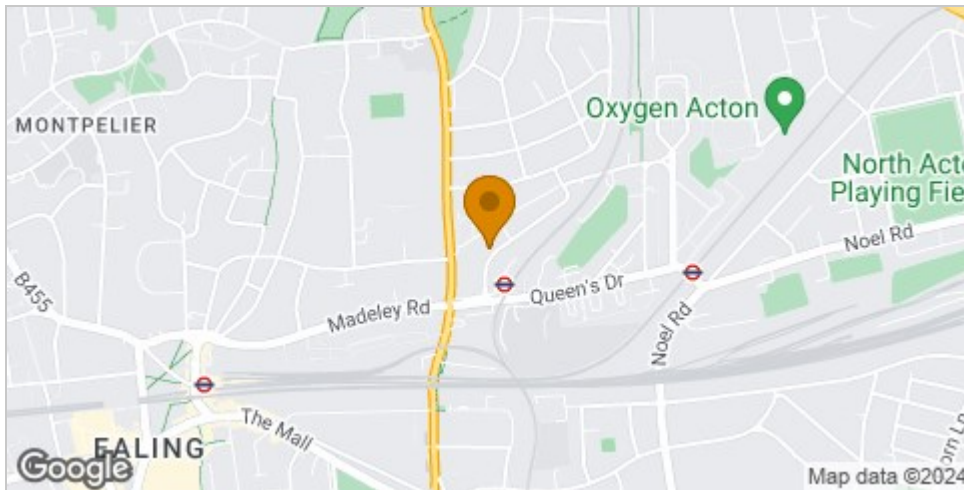




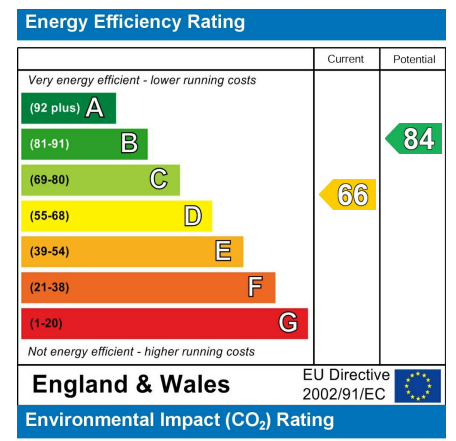
Floor Plan



Area Map



Energy Efficiency Graph



Viewing

Please contact our Castle Hill Properties - London, Berks & Bucks Office on 020 8998 1118 if you wish to arrange a viewing appointment for this property or require further information.

These particulars, whilst believed to be accurate are set out as a general outline only for guidance and do not constitute any part of an offer or contract. Intending purchasers should not rely on them as statements of representation of fact, but must satisfy themselves by inspection or otherwise as to their accuracy. No person in this firm's employment has the authority to make or give any representation or warranty in respect of the property.