



## North Town Moor

Maidenhead SL6

Offers In The Region Of £1,225,000



# North Town Moor Maidenhead SL6



## Summary Description

Fantastic opportunity for an end user looking to run a business, includes additional land to the side for parking or an investor looking to design & build a residential block of flats. With views across North Town Moor, viewings are a must.

4 bedroom detached property with land

Potential as a development stpp

Chain free

Includes land to side & 3 garages

Lovely views across the Moor

Requires modernisation

Freehold

Lapsed commercial licences

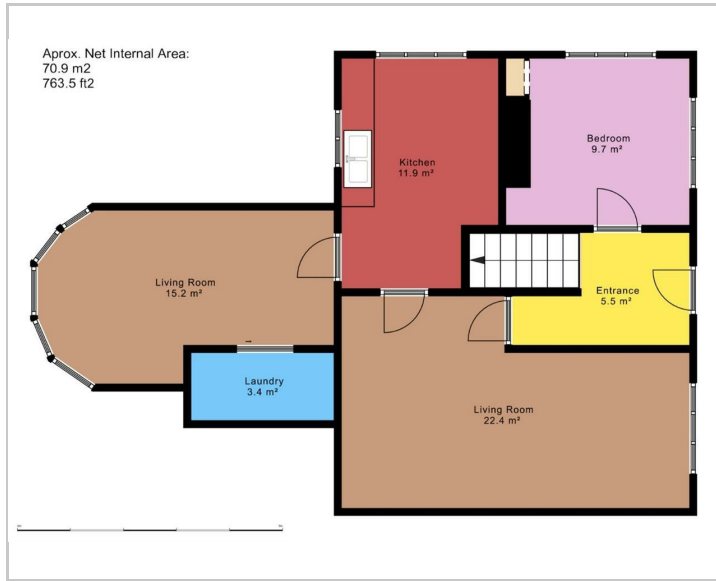
Ideal as a dental/doctors practice

Viewing highly recommended

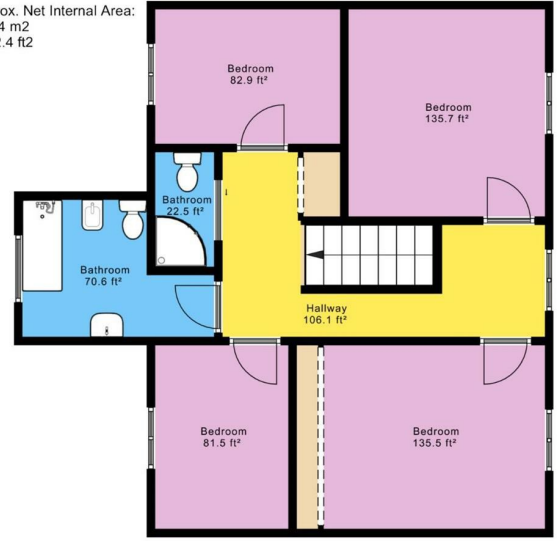




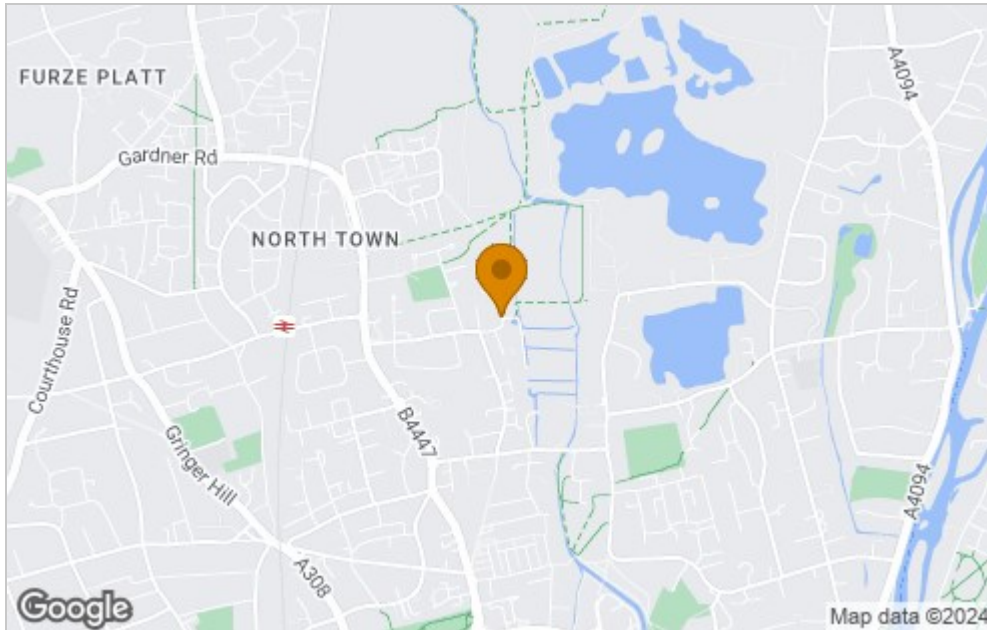
## Floor Plan



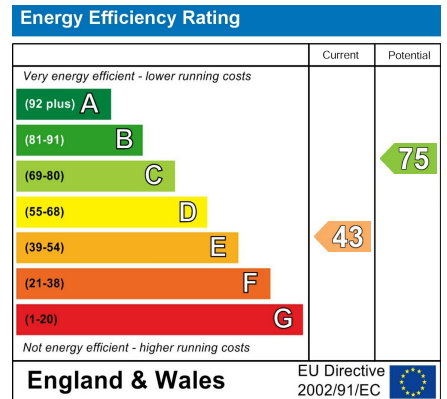
Aprox. Net Internal Area:  
63.4 m<sup>2</sup>  
682.4 ft<sup>2</sup>



## Area Map



## Energy Efficiency Graph



Council Tax Band: E

## Viewing

Please contact our Burnham Office on 01753 255 755 if you wish to arrange a viewing appointment for this property or require further information.

These particulars, whilst believed to be accurate are set out as a general outline only for guidance and do not constitute any part of an offer or contract. Intending purchasers should not rely on them as statements of representation of fact, but must satisfy themselves by inspection or otherwise as to their accuracy. No person in this firm's employment has the authority to make or give any representation or warranty in respect of the property.