



RESIDENCE

123 Balmore Drive, Hamilton, ML3 8BY

www.residenceestateagents.co.uk



Viewing by appointment with Residence Hamilton
T: 01698 444333 | E: hamilton@residenceestateagents.co.uk | A: 34 Cadzow Street, Hamilton, ML3 6DG





3 Bedrooms | 1 Public Rooms | 1 Bathrooms

This charming and spacious three-bedroom end-terraced home is located on the ever-popular Balmore Drive, just a short distance from the town centre of Hamilton. Perfect for families, it offers generous living space and plenty of room to grow.

The property welcomes you with a bright and inviting reception hallway, providing access to the lounge, kitchen-diner and staircase to the upper level. The airy lounge offers ample space for both relaxing and dining, with a door leading through to the kitchen. The large fitted dining kitchen features a range of wall and base units and opens directly onto the rear garden, ideal for family living and entertaining.

Upstairs, there are three well-proportioned bedrooms – two spacious doubles and a comfortable single – along with a family bathroom complete with shower over the bath.

Set on a generous corner plot, the home also benefits from a spacious, fully enclosed rear garden, providing an excellent outdoor space for children to play or for enjoying summer evenings.

Meikle Earnock enjoys a selection of local amenities with Hamilton town centre a short distance away offering a comprehensive range of retail shopping, restaurants, bars and sporting facilities. For the commuter there are regular bus and railway links and easy access to the motorway networks connecting Glasgow, Edinburgh and beyond.



sq ft | EER =

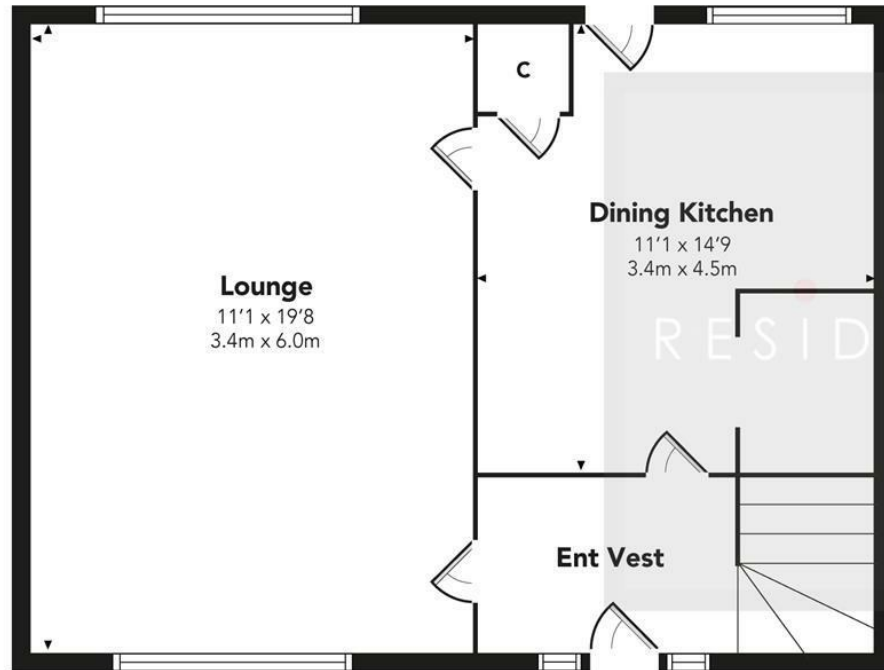


RESIDENCE

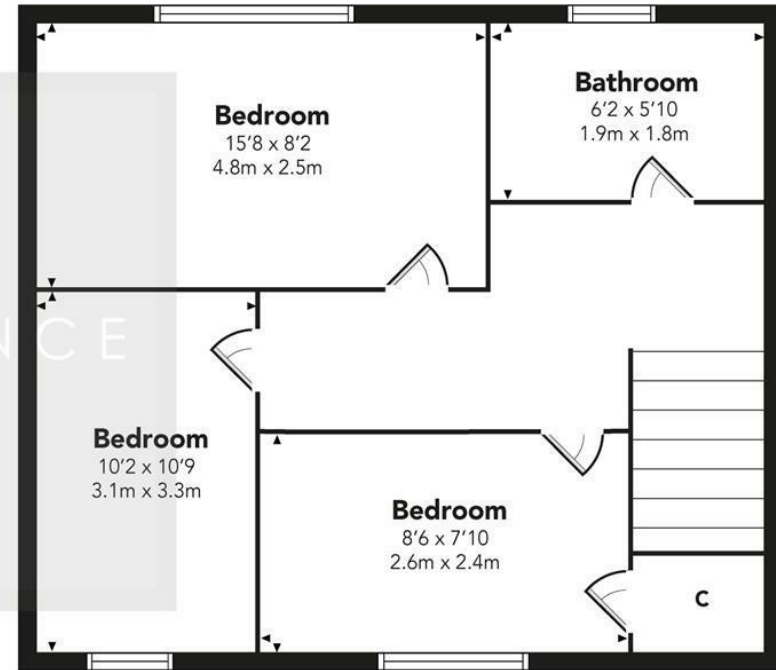


Baltimore Drive

GROUND FLOOR



FIRST FLOOR



Floor Plan measurements are approximate and are for illustrative purposes only. While we do not doubt the floor plans accuracy, we make no guarantee, warranty or representation as to the accuracy and completeness of the floor plan. You or your advisors should conduct a careful, independent investigation of the property to determine to your satisfaction as to the suitability of the property for your space requirements.

Produced by Plush Plans Ltd

We believe these details to be accurate; however, they do not form any part of a contract. Fixtures and fittings are not included unless specified in the enclosed. Photographs are for general information and it must not be inferred that any item is included for sale with the property. All distances and measurements are approximate. Floorplans may not be to scale and are for illustration purposes only.