



RESIDENCE

54 Galloway Avenue, Hamilton, ML3 7UR

www.residenceestateagents.co.uk



Viewing by appointment with Residence Hamilton
T: 01698 444333 | E: hamilton@residenceestateagents.co.uk | A: 34 Cadzow Street, Hamilton, ML3 6DG



3 Bedrooms | 3 Public Rooms | 2 Bathrooms

This modern 3 bedroomed detached family home is located within a desirable residential estate and offers a spacious layout of apartments formed over two levels.

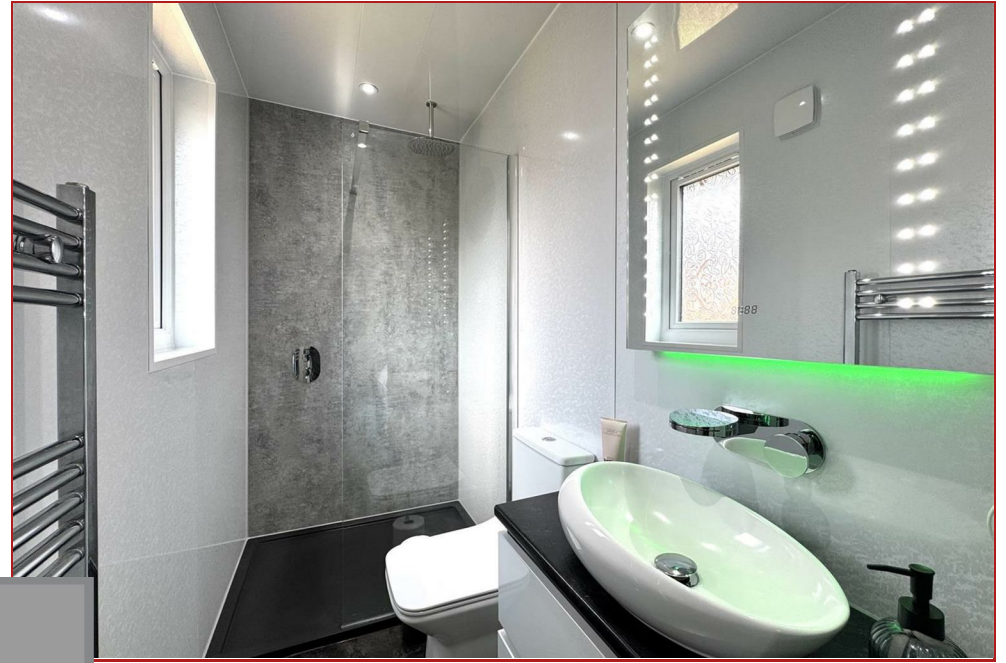
The accommodation comprises entrance vestibule, spacious lounge with aspects to front and open plan access to formal dining room with patio doors leading to a garden room with aspects and access to the rear. Fitted kitchen with a range of base and wall mounted storage units, access to the side and access to a utility room. On the upper floor there are 3 bedrooms, 2 of which have fitted wardrobes, the master bedroom has its own modern en-suite shower room whilst there is a separate, modern fitted family bathroom.

Features of the property include gas central heating, double glazing, driveway, garage and maintained gardens to both the front and rear.

Hamilton is home to a wide variety of restaurants, bistros and pubs as well as excellent shopping facilities and sports amenities including golf courses, swimming baths, gyms and parks. There are several highly regarded schools as well as the nearby Hamilton College. For those commuting by public transport there are regular bus and train links to the surrounding towns including East Kilbride, Motherwell, Glasgow and Edinburgh whilst for those commuting by car the nearby M74 motorway provides excellent road links throughout the west of Scotland.

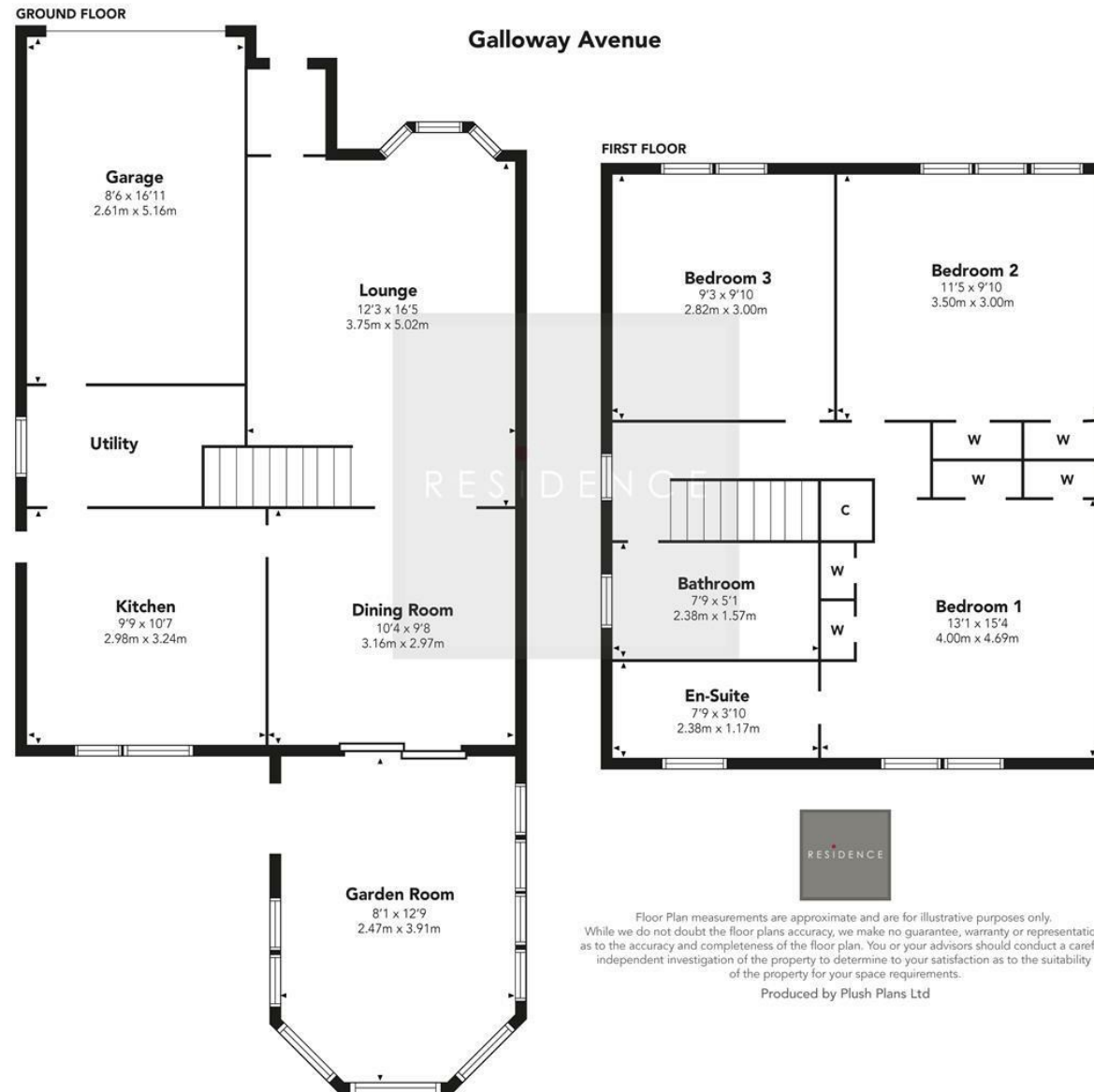


1173.00 sq ft | EER = C



RESIDENCE





We believe these details to be accurate; however, they do not form any part of a contract. Fixtures and fittings are not included unless specified in the enclosed. Photographs are for general information and it must not be inferred that any item is included for sale with the property. All distances and measurements are approximate. Floorplans may not be to scale and are for illustration purposes only.