



RESIDENCE

69 Vesuvius Drive, Motherwell, ML1 2EY

[www.residenceestateagents.co.uk](http://www.residenceestateagents.co.uk)





Viewing by appointment with Residence Hamilton

T: 01698 444333 | E: [hamilton@residenceestateagents.co.uk](mailto:hamilton@residenceestateagents.co.uk) | A: 34 Cadzow Street, Hamilton, ML3 6DG





RESIDENCE







## 5 Bedrooms | 2 Public Rooms | 3 Bathrooms

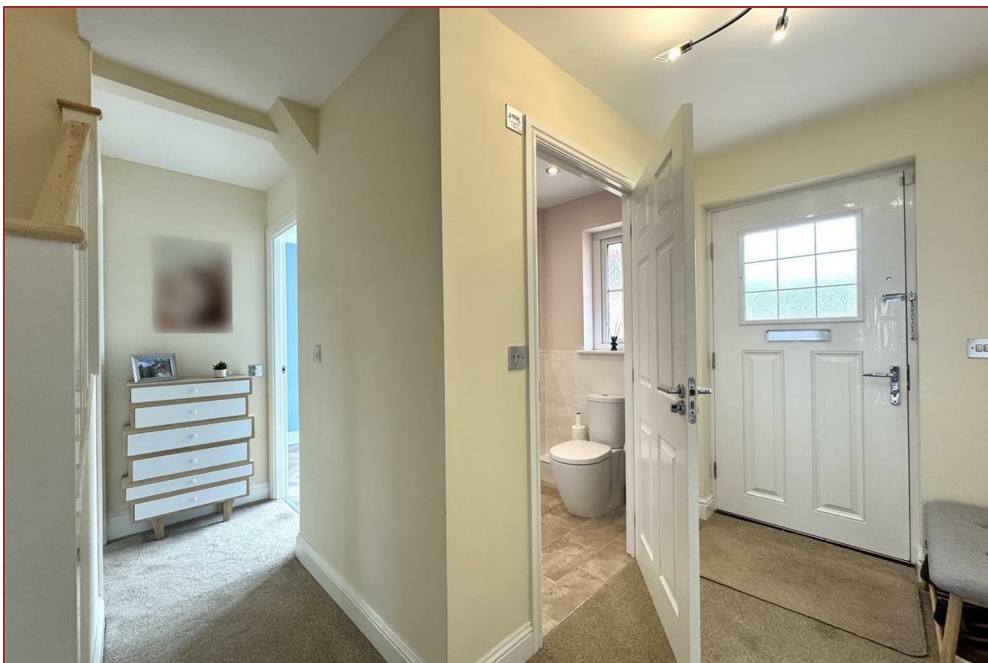
Enjoying an excellent position within this popular residential development, this successfully reconfigured 5 bedroomed family detached villa sits within great size gardens.

The property offers a versatile and well-designed layout of apartments which are formed over 2 levels and finished with neutral tones throughout.

The accommodation comprises of a welcoming reception hallway with staircase to the upper floor level, cloaks/wc with 2-piece suite, generous sized lounge with aspects to front, a bright, airy and sizable open plan family room, dining area and modern fitted kitchen that has a range of base and wall mounted storage units with worktop surfaces whilst there is a separate, well equipped utility room. The property has 5 bedrooms, one of which is located on the ground floor level. Upstairs there are 4 bedrooms, 3 of which have storage facilities, the master has its own en-suite shower room whilst there is a separate modern fitted family bathroom.

Features of the property include gas central heating, double glazing, monobloc driveway and sizable gardens that extend to the front, side and rear.

Vesuvius Drive is a desirable residential development within a short distance of the popular towns of Motherwell and Wishaw. Amenities include local shops, supermarkets, schools, college, health and leisure facilities. Transport access for commuting to Glasgow and Edinburgh via motorway network and public transport link.



1528.00 sq ft | EER = C





RESIDENCE





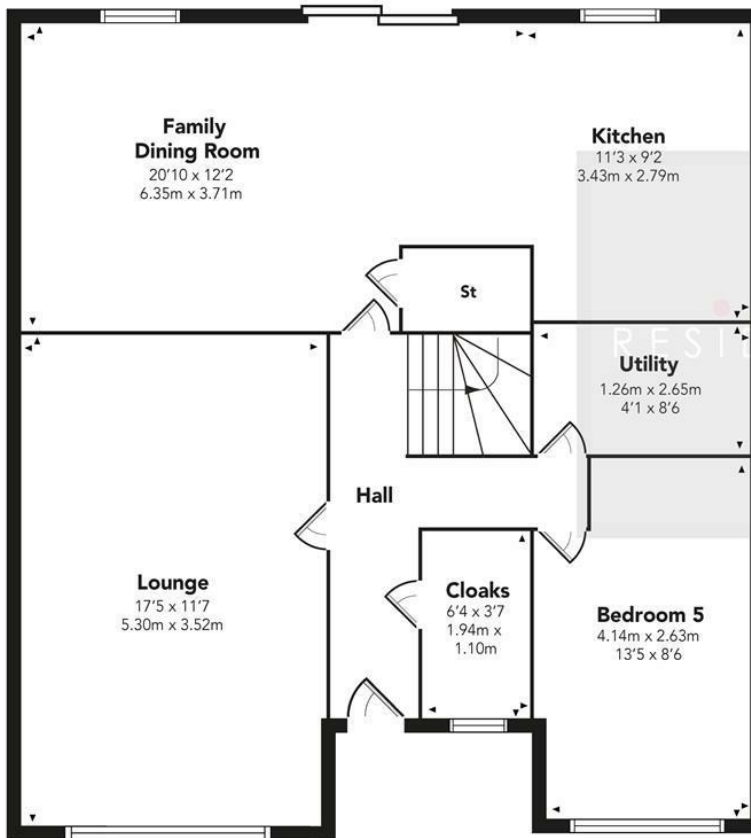


RESIDENCE

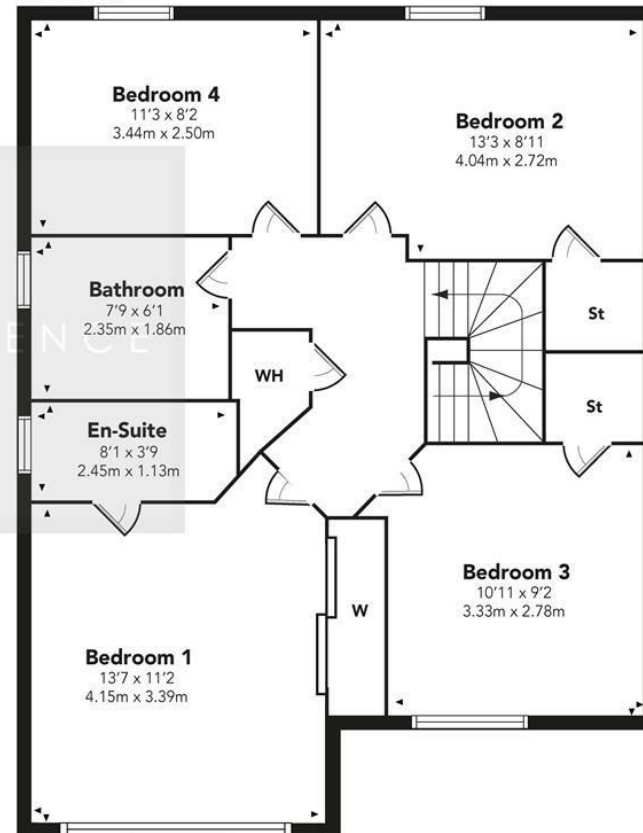


## Vesuvius Drive

GROUND FLOOR



FIRST FLOOR



RESIDENCE

Floor Plan measurements are approximate and are for illustrative purposes only. While we do not doubt the floor plans accuracy, we make no guarantee, warranty or representation as to the accuracy and completeness of the floor plan. You or your advisors should conduct a careful, independent investigation of the property to determine to your satisfaction as to the suitability of the property for your space requirements.

Produced by Plush Plans Ltd

We believe these details to be accurate; however, they do not form any part of a contract. Fixtures and fittings are not included unless specified in the enclosed. Photographs are for general information and it must not be inferred that any item is included for sale with the property. All distances and measurements are approximate. Floorplans may not be to scale and are for illustration purposes only.